

**SIDE ENTRY PIT CONSTRUCTION  
WITH BARRIER KERB & CHANNEL**

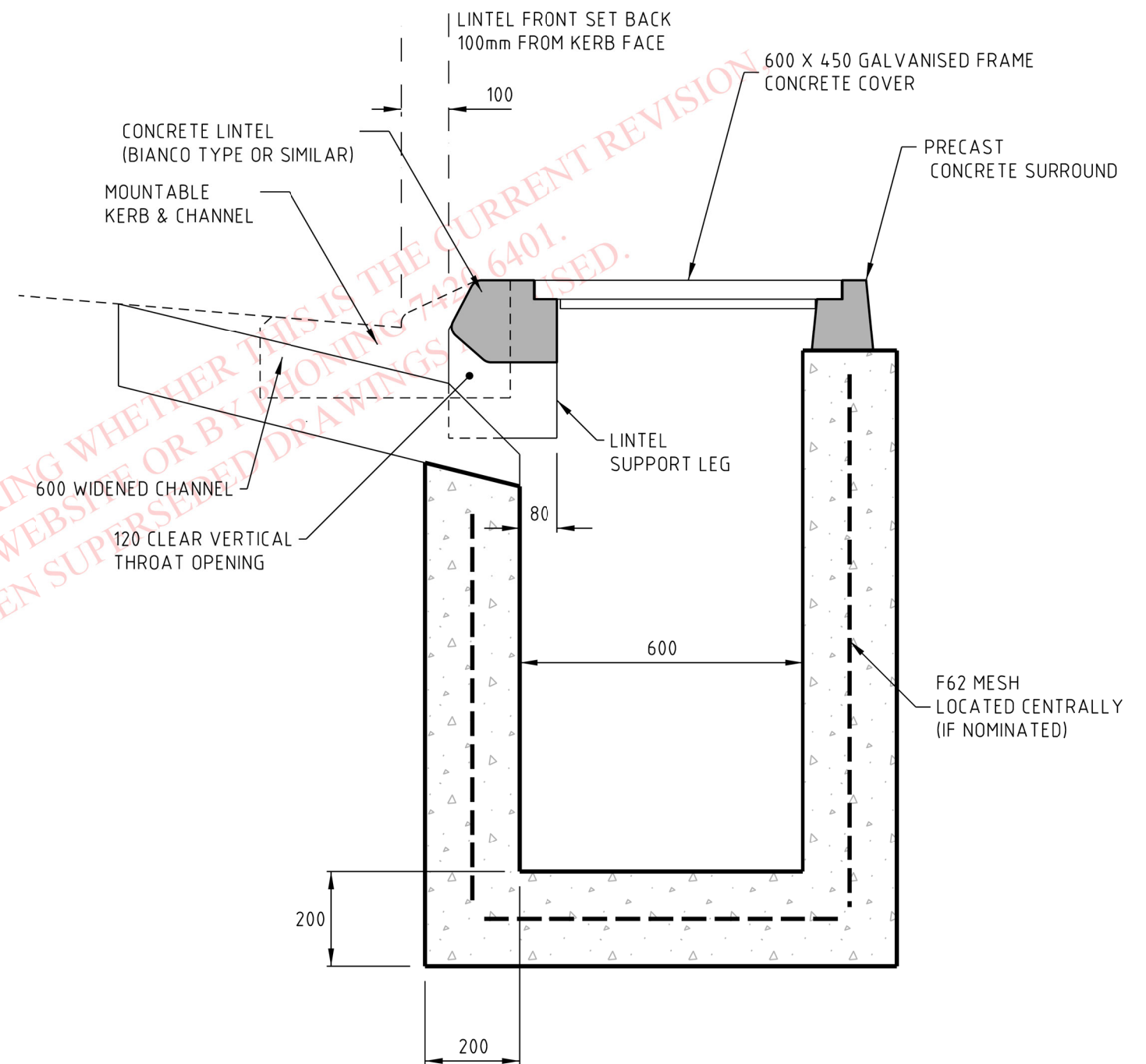
**NOTE:**

1. CONCRETE TO BE A MINIMUM STRENGTH OF 32MPa WITH 14mm AGGREGATE.

(Refer Standard Drawing SD-05)

All Diagrams Not to Scale

ALL DIMENSIONS ARE IN MILLIMETRES UNLESS OTHERWISE SHOWN



**SIDE ENTRY PIT CONSTRUCTION  
WITH MOUNTABLE KERB & CHANNEL**

(Refer Standard Drawing SD-06)



**THE CORPORATION OF THE CITY OF MARION**

**SIDE ENTRY PIT CONSTRUCTION DETAIL (CAST INSITU)  
FOR PRECAST CONCRETE LINTEL INSTALLATIONS**

Drawn : A.M.D

Date : 31 June 2007

Approved :

Last Revised : 4 March 2022

Ref. No. : SD-07