



CAPELLA RESERVE CONSULTATION REPORT

OCTOBER 2020



CONVIC



Contents

Introduction
Consultation Findings - Skate Engagement
Consultation Material
Community Engagement - Survey Responses
Community Drop-In
School Consultation
Appendix

JPE Design Studio Pty Ltd
Architecture
Interior Design
Landscape Architecture
Urban Design

Introduction

As part of the Capella Reserve Upgrade, a consultation approach was developed which sought to engage with the community via;

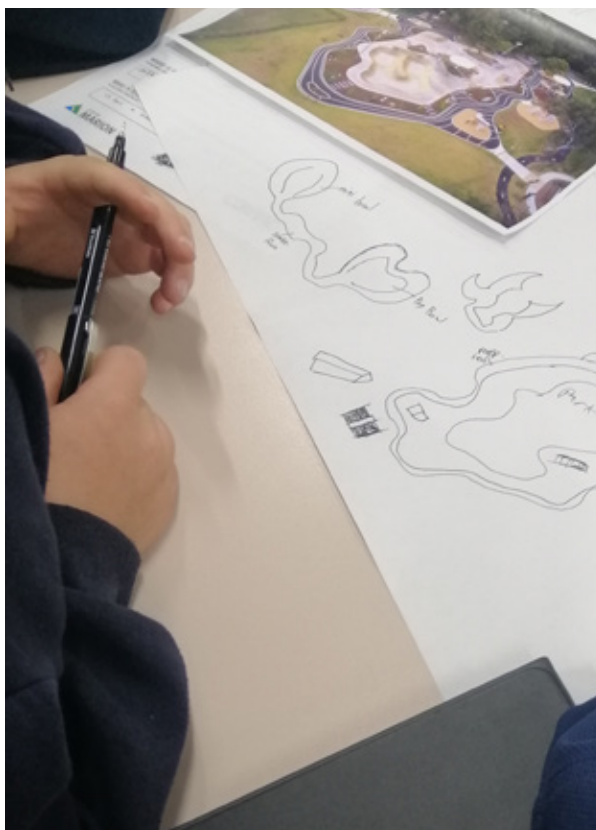
- Survey
- School workshops
- Community Drop-in session on site

The consultation approach aimed to gather views from a broad spectrum of user groups and demographics.

The purpose of the consultation was to gather thoughts and feelings of developing Capella Reserve as well as engaging local youth and community, and ultimately instilling a sense of ownership over the final built outcome.

Initial community consultation on the draft concept has been completed. This included a pre-design skate park survey, community consultation on the draft concept plan and two school workshops.

Feedback from the consultation has highlighted the reserve is a valued community asset with generally positive feedback towards the upgrade.



Consultation Findings

SKATE ENGAGEMENT

Skate Park Pre-design Engagement Findings

A skate park pre-design consultation was undertaken from 10 to 24 August 2020. There were 43 respondents to the online survey. The questions sought feedback on the experience of the riders, preferred skate park style, design themes and associated infrastructure. Key findings are below.

The majority of respondents (28) were skateboarders (in comparison to other wheeled sports such as scooter, bmx, roller skating).

Most participants (18) listed themselves as beginner riders, however an even mix of intermediate (13) to advanced riders (11) was also shown.

A clear preference for a mixed facility of street and transition style elements was indicated by most participants (28).

Surrounding skatepark facilities indicate mainly transition based facilities with advanced provision.

Standout features highlighted by the community draw reference to the existing Hallett Cove facility. The central funbox and unique curved rail were mentioned by many participants as key features they currently enjoy to ride.

Many highlighted the need for shade, spectator seating and lighting.

Key ideas noted by participants were the iconic Sugarloaf, Hallett Cove board walk, the theme of the surrounding coastal location and natural environment.

Skate Park Design Workshop HC R-12

A student skate focused workshop was held with approximately 20 students at Hallett Cove R-12 School. The workshop involved a presentation from skate park designers, CONVIC. Work to date was presented, including a video of similar scale skate parks and elements which could be integrated within the skate park design. The video gave the students an understanding of what is possible for the Hallett Cove skate park design.

The second part of the workshop divided students into smaller groups of five. Representatives from CONVIC, JPE and Council then encouraged discussion around what the students would like to see at the skate park. Sketches of jumps and key elements were developed by the students. A common theme throughout this discussion was the integration of urban elements within the skate park design, as well as plants and trees to provide shade. Most students described themselves as beginner riders.



Skate Park Design Response

User Groups

Whilst the majority of responses were skateboarders the design has been developed to cater to all user groups including those participating in other active wheeled sports including BMXing, scooter, roller skating as well as those non-active participants looking to spectate and enjoy the public space.

Skill Level Provision

It is important to provide for skill progression within the facility while allowing for beginner users and future generations to learn and continue ongoing progression and for advanced users to continue to be challenged and remain interested. The design has adequate fundamental beginner elements to cater for the existing users but it also provides obstacles for higher abilities.

Skate Typology

The design has been developed with consideration to the features found at surrounding skate parks to help form a complimentary skate network throughout the City of Marion region.

With separated flowing transition and street areas a range of beginner and advanced features will be incorporated as key design considerations.

The design has taken inspiration from some of the existing key features at the Capella Skate park and incorporated them into the design.

User & Spectator Amenities

The provision of seating, shade and lighting has been incorporated into the design to provide a community space that can be used by a variety of different user groups and provide comfortable spectator amenities.

Iconic Elements + Local Identity

To celebrate Hallett Cove and the wider City of Marion region and give the park its own identity the skate park has been designed to reflect the surrounding contextual character and environment.



Consultation Material

Prior to undertaking the community survey and drop-in day, the following material was developed to best communicate preliminary design thinking.

- Flyers
- Brochure
- Posters



Reserve Upgrade - Have Your Say

Capella Reserve Upgrade

Capella Drive, Hallett Cove

Council are investing in the upgrade of Capella Reserve. We are currently seeking feedback on the draft concept plan. You can help shape this reserve upgrade by:

Completing the online survey
<https://makingmarion.com.au/capella-draft-concept>

Attending a Community Drop-In
 Come see us at Capella Reserve 10am - 11:30am
 Saturday 19th September.

Consultation closes 28 September
www.marion.sa.gov.au
 8375 6600



Capella Reserve Upgrade | Draft ConceptCapella Reserve Upgrade | Draft Concept

Project Timeline





Capella Reserve

Connect with us:
 Help us shape Capella Reserve.

Share your feedback online:
<https://makingmarion.com.au/capella-draft-concept>

You can also follow us on facebook or visit our website to stay across latest news

Follow us
 City of Marion

View the webpage
<https://www.marion.sa.gov.au/about-council/playground-and-reserve-upgrades/naningai-and-capella-reserves>

Email us
amy.lodicosi@marion.sa.gov.au

Call us
 08 8375 6600

Project Summary

Help design the upgrade at Capella Reserve, including activities for a range of ages and abilities. Such as:

- Play
- Fitness
- Skate/Scooter
- Walking trails
- Seating and shelters
- Picnic facilities

Please help us shape this reserve upgrade by providing your thoughts and comments within the Capella Reserve survey <https://makingmarion.com.au/capella-draft-concept>

A Community Drop-In will be held at Capella Reserve 10am, 19th September. This will be an opportunity to have your say in person, as well as gather more information on the Capella Reserve Upgrade.

Example Images



Reserve Design

The design will include:

- Enhanced existing entry points
- Reconfigured car park: new lighting, line marking, vehicular connections and improved visibility
- Parkour / bouldering elements
- Improved skate park: new lighting and visibility
- Public toilet with shared community facilities: BBQ, shelter, and seating
- Fitness trail, with fitness equipment
- Revegetation zone with walking trail and seating nodes
- Opportunity for improved pump track
- Nature play space
- Recreation spaces with seating and shelter, drink fountains and dog friendly amenities
- Opportunity for larger adventure play elements
- Integration of youth focused parkour play / climbing elements



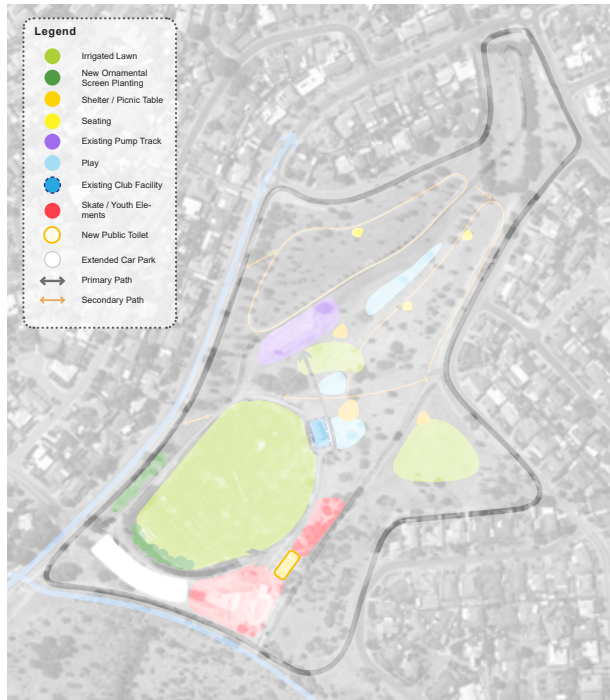
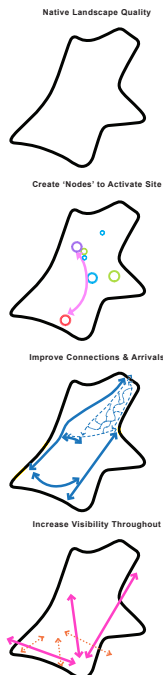
* Items are indicative only. Final items may vary to those shown in pictures.

HELP SHAPE THIS SPACE

Capella Reserve Upgrade | Draft Concept



Key Design Moves



Draft Design

- Design elements include:
- Enhanced existing entry points
 - Extended car park with new lighting, line marking, vehicular connections and improved visibility
 - Improved skate park & new youth facilities; new lighting and visibility
 - Fitness trail/obstacle course
 - Revegetation zone with walking trail and seating nodes
 - Opportunity for integrated water sensitive urban design
 - Improved landscape amenity
 - Nature play elements
 - Shelters and seating, drink fountain with dog bowl
 - Opportunity for larger adventure play elements
 - New public toilet with shared community facilities; BBQ, shelter, and seating

Project Timeline



SEPT 20

HELP SHAPE THIS SPACE

Capella Reserve Upgrade | Draft Concept



New Reserve Facilities Included In The Design

6 Parkour / Bouldering & Youth Spaces



The skate park will be retained in the current location and upgraded, however developed to be more visible from Capella Drive. New lighting, shelter and supporting facilities will be incorporated.

7 Shared Community Facility

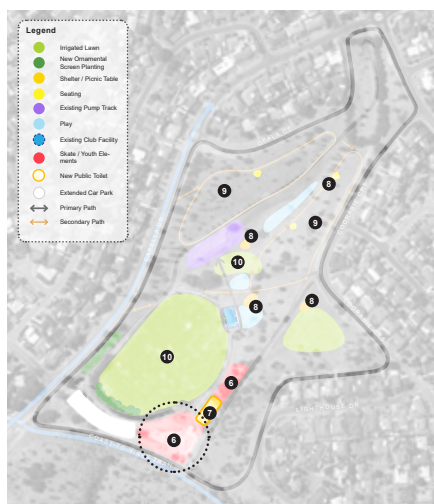


A new shelter, public toilets and possible outdoor kitchen/bbq will be incorporated as a shared facility adjacent to the skate park. More visible to the oval edge, this community facility will provide opportunity for youth events and family gatherings.

8 Picnic / Seating & Shelters



Picnic tables, seating and shelters will be integrated throughout the reserve, providing more opportunity for social gathering.



9 Walking Trails & Interpretive Artwork



Improved walking trails and interpretive art work are proposed. These trails will provide greater opportunity to connect with the Capella Reserve kaurna landscape.

10 Recreation



Currently, Capella Reserve has only one portion of irrigated lawn which is the oval space. The upgrade is proposing more open irrigated grass areas, providing options for play beyond the existing oval space, such as dog walking and family picnic spaces.

Connect with us:
[Help us shape Capella Reserve.](#)
[Share your feedback online.](#)
[Email: \[community@capella-reserve.org.au\]\(mailto:community@capella-reserve.org.au\)](#)
 You can also follow us on Facebook or visit our website to play across latest news.

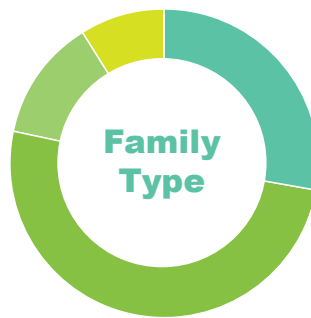
Follow us:
 City of Marion
 Visit the website: www.marion.sa.gov.au/marion/capella
 Email us: community@capella-reserve.org.au
 Call us: 08 8573 3000

Community Engagement

SURVEY RESPONSES

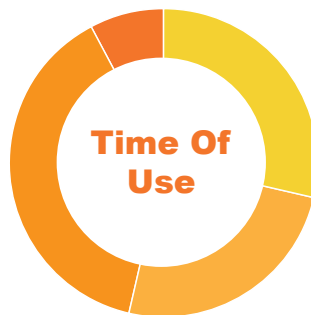
Consultation was undertaken from 11 September to 5 October 2020. Council received 73 responses to the online survey. The consultation included questions to identify preferences for key recreation items including the playground equipment, scooter / bike facilities, youth recreation items to compliment the skate park as well as to understand what people like about the current space and any other features they would like to see incorporated into the design. Key findings are below.

Most respondents (40) were parents of older children (8+).



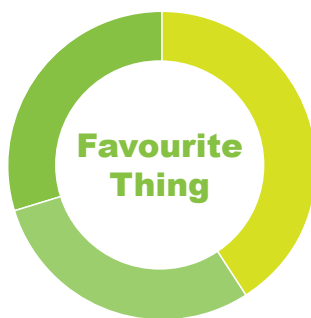
- Parents / Guardians with older children - 8+ (40)
- Parents / Guardians with young children (22)
- Single / Couple with no children (10)
- Retiree (7)

Popular times of use included between 3-7pm (55 respondents) followed by between 7am – 11am (41) respondents using the reserve.



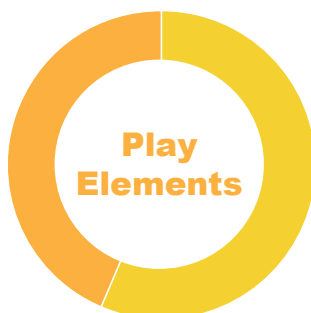
- 7am - 11am (41)
- 11am - 3pm (36)
- 3pm - 7pm (55)
- 7pm - 11pm (11)

When asked their favourite thing about Capella reserve, the majority of responses (18) like the large open space, followed by the oval (13) and the skate park (13).



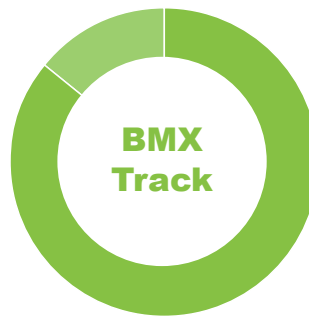
- Large Open Space (18)
- Oval (13)
- Skate Park (13)

When asked about preferred play elements, the dry creek bed was the favourite out of 3 suggested nature play items, followed by rock steppers. The slide mound with climbing nets was the preferred adventure play item (39 residents) but there was also support for the flying fox item (30).



- Slide Mound & Climbing (39)
- Flying Fox (30)

The majority of respondents want to see the dirt (bmx) pump track improved (62 residents), however there were a few comments questioning whether it was well used and other comments that were more focussed towards mountain bike use rather than bmx.



- Track Improvements (62)
- No Improvements (10)

When asked which location was preferred for a fitness trail/obstacle course there was an even split for around the oval (35 residents) and at the north western bank of the reserve (35 residents).



- Around the Oval (35)
- North Western Bank (35)

The preferred style of fitness equipment was a ninja warrior course, followed by a static course. These responses were collected via a ranking system where 1 was the most preferred options and 3 was the least preferred option.



- Obsactle Course / Ninga Warrior (1.69 ranking)
- Static (1.97 ranking)
- Fitness Markers (2.33 ranking)

Climbing and bouldering was the preferred youth recreation element, followed by a basketball key. These responses were collected via a ranking system where 1 was the most preferred options and 3 was the least preferred option.



- Climbing & Bouldering (1.73 ranking)
- Basketball Key (1.81 ranking)
- Parkour (2.44 ranking)

When asked about any other facilities the community would like to see the top response was for a fenced dog area (12), followed by shade (4) and additional large trees along the walking trails (2).



- Fenced Dog Area (12)
- Shade (4)
- Walking Trails (2)

Community Drop-In

The Community drop-in drew 14 people (including children) to the session with many of the participants neighbouring Capella, having walked to the reserve from their home. Conversations with these participants were primarily positive. Key comments included:

- Great idea to upgrade
- Live across glade
- Use for dog walking
- May as well keep soccer and use oval since already have lights
- Love to see trees around the oval removed to open up views (x 3 requested)
- The toilet near the skate park is good
- Continue pathway through reserve (opposite Lighthouse Drive) where the parking invert was added.
- But needs sealed path to get to the coast to vines walking trail
- Metal slide – too hot in summer. Walking trail with sculptural elements (indigenous artist)
- Barbeques would be appreciated
- Shade for adventure play
- Car parking positive increase for residents nearby
- Footpaths – trees near to?
- Footy goals would be great
- Pump track for remote-controlled cars
- Littler athletics – winter sports
- Dogs in skate park – shouldn't be in this area. Some signs up, but they still come in.
- Playground is good in the skate area as most younger kids get bored and play chasey or slide down the skate park





School Consultation

WORKSHOP FINDINGS

Approximately 30 middle school students (aged 13-16 years), from Hallett Cove R-12 School, participated in a Capella Reserve Design Workshop.

The workshop was divided into two parts;

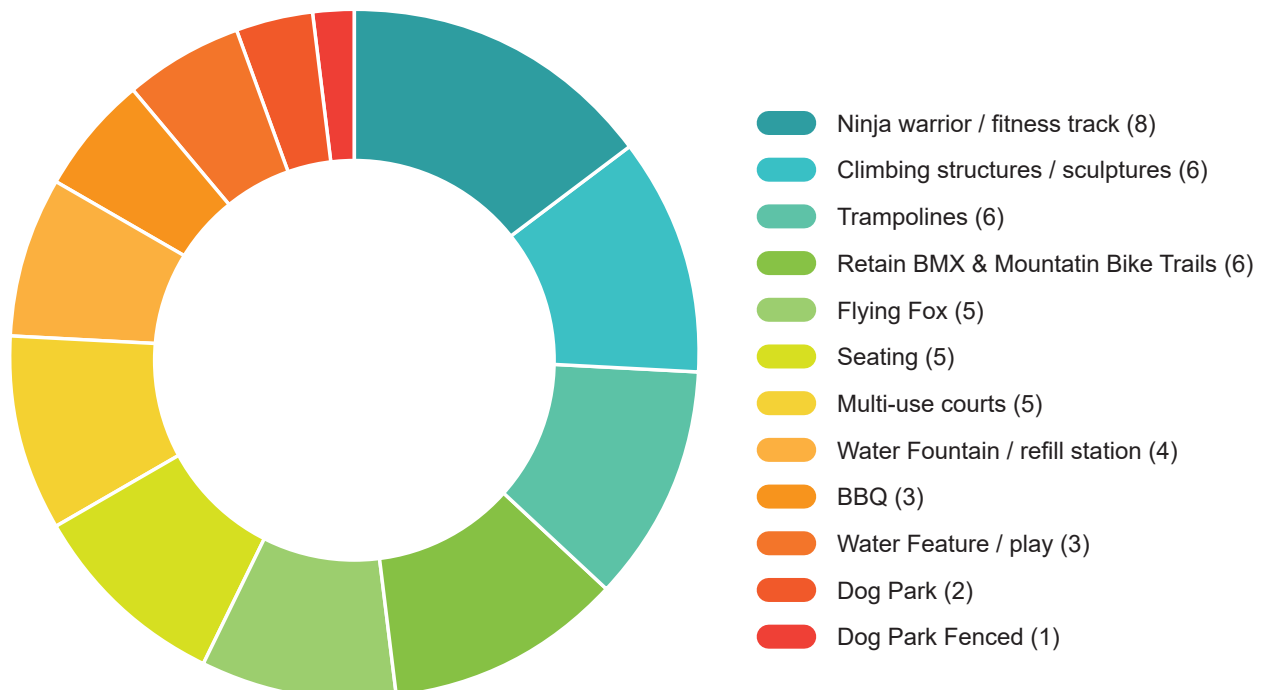
The first part prompted informal discussion about the Capella Upgrade, asking the following questions;

- What do you like?
- What don't you like?
- What is missing?

The students provided a lot of positive feedback, with the majority liking what they saw. We had no recorded comments regarding what was not liked. The question about 'What is missing' is what discussion focused on, with students coming up with other ideas which could be introduced into Capella Reserve. Some recurring desires included:

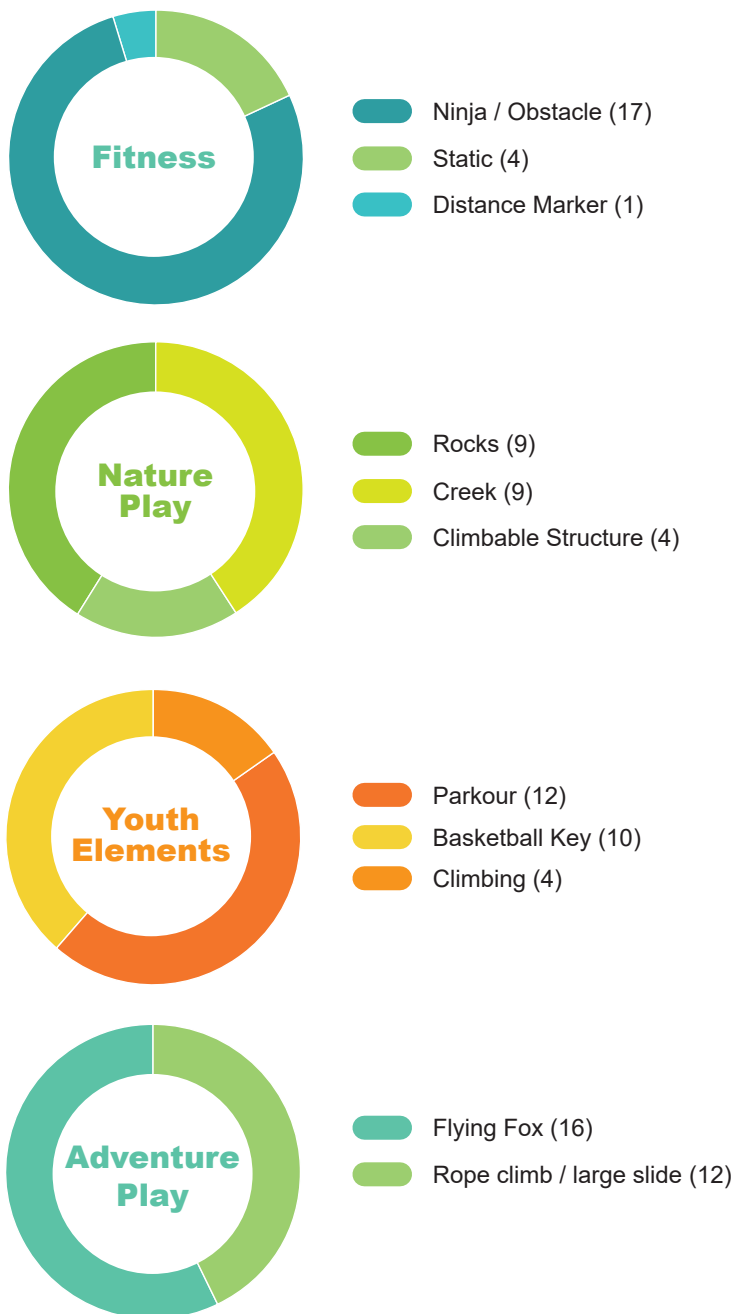
- Ninja warrior/fitness track
- Climbing structure/sculptures
- Trampolines
- Retain BMX & mountain bike trails
- Flying fox
- Seating
- Multi-use courts
- Water fountain/refill station
- BBQ
- Water feature/play
- Dog park

Part 1 Findings: Discussion in small groups



Part 2 Findings: Apply sticker to top three choices

The **second part** asked the students to put a sticky dot on the image they preferred from the options provided. The adjacent graphs illustrate preferences recorded:





Online Survey Comments

SUMMARY OF KEY THEMES RECIEVED

Q3 What is your favourite thing about Capella Reserve?

<i>Item raised</i>	<i>No. times item raised</i>
Large area/open space	18
Oval	13
Skate Park	13
Proximity to home	7
BMX/Pump track	6
Walking trails	6
Able to walk dog	6
Greenery/Trees/Natural area	5
Ocean views	4
Varied space	2
Both kids play and dog walking	2
Family friendly	1
Area for older people play	1
Away from main road	1
Feel safe	1
Sports facility	1
Quiet reserve	1
Nothing at the moment	1
Few buildings	1
Few cars	1
Tree shade	1
Location	1

Q7 Do you have any other comments on the existing dirt (bmx) bike track?

<i>Item raised</i>	<i>No. times item raised</i>
Upgrade and make bigger	7
Covered in prickles/Three corner jacks	3
Make it longer, more height to ramps	3
Needs additional area for older kids/More challenges – keep separate to younger kids	3
Add small jumps	2
No	2
Consider drainage – boggy oval	2
Seating	2
Bike track rarely used (daily visitor)	1
Make this area a dog park	1
Kids on mountain bikes use, rather than BMX	1
Build track for moderate to advanced abilities	1
Badly designed from the beginning. Consult with HC school. Build something great for under \$5k	1
Design and surface not great	1
Only used for short periods	1
Add a ramp	1
Consider Tangari and Prescott College dirt jumps	1
Good location	1
Build in a slope	1
Consider surface for upkeep and user safety	1
Hardly used, return to green space	1
Good for electric off road cars	1
Fine the way it is	1
No noisy motor bikes or scooters – dangerous and disruptive to residents	1
Great for smaller kids	1
Looks tired	1
Unsure if actually used	1
Maintenance for track needed	1
More kids use this – engage with them	1
Good for remote controlled cars	1

Q11 Are there any other support facilities you would like to see within Capella Reserve? Do you have any other comments?

<i>No. times item raised</i>	<i>No. times item raised</i>
Dogs	
Fenced dog area	11
Remove dogs from the oval	2
Keep dogs and children separate	1
Limit dog access	1
Amenities	
Shade / shelter	5
Toilets	3
Seating / picnic benches	3
Security cameras	2
Drink fountain (with dog bowl)	2
Outdoor classroom	1
Barbeque area	1
Large bright murals (reduce graffiti)	1
Dog poo bags	1
Solar lighting	1
No unisex exelooos	1
Carpark / Traffic/ Pathways	
Car parking	3
Car parking is an issue during soccer games	1
Be mindful of cars and noise for local residents	1
Park and walk carpark for nearby schools	1
Please ensure vehicles cannot access the reserve, damage has occurred	1
Room for food trucks	1
Paved pathway for bike/pram/wheelchair access from reserve to Coast to Vines trail	1
Tarmac paths	1
Crossing for Nannigai Drive laneway to Nannigai Reserve	1
Crossing for Capella to Nannigai reserve	1
Landscaping	
Plant large trees to line walking trails.	3
Plant life is lacking	1
Play / Recreation	
Park for older children and youth (challenging)	3
Water play	2
Bike track	2
Big long slide	1
Fitness trail / outdoor gym (crossfit)	2
Fenced bike track	1
Half pipe at skate park	1
Ninja warrior course is brilliant	1
Spread out ninja course through entire park and around oval (3.5km course)	1
Adventure playground	1
Don't need flying fox	1

Sport	
No organised sport stopping other ratepayers using the reserve	2
Keep /upgrade cricket nets	2
AFL goal posts	1
The oval complex. Clubrooms or nets behind soccer goals	1
Retain sports facilities, cricket nets and oval	1
Install goal posts either end of oval	1
Maintenance	
Ongoing maintenance needs work – mowing, rubbish, fallen branches and weed control	1
Oval drainage	1
Stop cars doing burnouts on oval	1
General Comments	
All of the above, amazing	1
Great ideas	1
Yes to all of that	1
All of these will be fantastic as well as the playground	1
Dislike plans concerned about more people, skaters vandalism and graffiti at site	1
Maintain peace of the reserve	1

School Comments

SUMMARY OF KEY THEMES RECIEVED

<i>Play / Recreation – Item Raised</i>
Trampoline/s (6)
flying fox (4)
baby useable flying fox
add a mini beach, sand and water play (2)
bridge, water feature, pump, mini river
merry-go rounds,
swings
netted swings – giant
giant spider web structure
snake run
log/sticks to use for forts, tyre swings
hamster wheel
what is liked: the use of the playground space
sculpture that you can climb
pool
tree sculpture that you can walk across
a level playground, 1 younger, 2 older (challenging)
nature play isn't much used, add spots to find creatures like frogs ie rocks to turn over

<i>Fitness – Item Raised</i>
ninja warrior (2)
commando / obstacle course / rope/ hovering course (2)
young child safe parkour course
fitness track,
pull up bars, sit up benches

<i>Pump Track – Item Raised</i>
big jumps/really long
pump track: needs to have a good flow so you can just keep riding and it's all connected
improve the dirt jumps
dirt track from the hills
dirt tracks
cruising tracks
pump tracks – west beach
mountain bike trails

<i>Sports / Courts – Item Raised</i>
handball court
courts for sports eg basketball, 4 square
basketball court
fix up the cricket nets
more courts, handball, basketball, hockey
irrigated lawn for other sports
football goals
soccer goals
cricket pitch
fencing (sport) area
cricket nets/cages (baseball)
multipurpose sports
volleyball nets please
tennis court, netball and basketball rings

<i>Amenities – Item Raised</i>
wifi shelters and phone charges
bbq (3)
food facility/vending machine
cctv
very nice seating area, open space
Bins replaced
water fountain
more seating
water refill stations around the reserve - dog bowl?
more shade
more benches
new lights
vending machine

<i>Carpark / Pathways – Item Raised</i>
driveway/carpark revamped, smooth
entrance needs improving
needs to be seamless transition into skate park, more usable tracks in, out and around wetland
housing area on the side have very minimal entries (either walk through trees or walk around)
enhance more entrances for local residents
bigger car park

<i>Dogs – Item Raised</i>
fence around dog oval
dog park,
dog park – fenced = free roam?
dog park or an area for them

<i>Skate Park / Youth Recreation – Item Raised</i>
lights for the skate park. Big lights for more after hours
missing: seating area at skate park, toilet area at skate park
massive pipe tunnel
there should be a clear difference between playground and skate park so little kids don't go crowding the skatepark
parkour (2)
more benches and seating in skate park
rock climbing – rock climbing pentagon

<i>Art / Interpretive - Item Raised</i>
aboriginal paintings
Australian native animal sculptures could be fixed:
sculptural bench seats

<i>General Comments - Item Raised</i>
it all sounds decent
it is all very good
everything
make it a nice facility with noticeable theme
the well (2)
fish in the water
well maintained, for example if BB hoop breaks, it's repaired
have a clour theme though out the park
swings that don't break easily
make the water fountains have decent water