

# Tonsleyprogress

Innovation District

10  
years  
of Tonsley

Tonsley is a melting pot of innovators, businesses, manufacturers, co-working members, students and researchers collaborating across the 61-hectare site. For ten years we have been thinking and thriving together to achieve some outstanding progress.

A diverse mix of  
**140**  
organisations  
across the Tonsley  
community, including  
the co-working spaces.



Over  
**1,800**  
people work at Tonsley.

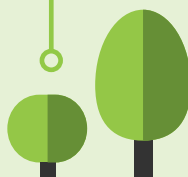
Almost  
**double**  
the amount of jobs  
compared to  
Mitsubishi's final years  
of car manufacture.



**600**  
plus people already call Tonsley  
home, with Tonsley Village  
expected to be home to 1,800  
residents when completed.



**1,000**  
plus trees and  
**42,500**  
shrubs planted.



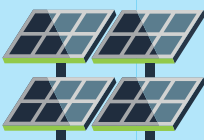
**8,500**  
students throughout the year across  
TAFE SA and Flinders University.



Tonsley produces approx 11.6 GWh  
of energy every year resulting in

**3,828**  
tonnes of carbon not  
being released into the  
atmosphere annually.

Up to 80% of Tonsley's annual energy  
is generated by 13,000 panels on the  
MAB rooftop, producing 5-Megawatts  
of solar energy.  
This is one of the  
largest rooftop solar  
arrays in Australia.



Almost 2,000  
students aged  
7-18 inspired  
by Tonsley's  
STEM  
Tours.



**\$395m**

of private sector investment delivered  
or committed to date\*

THE GLOBAL INSTITUTE  
ON INNOVATION DISTRICTS

## GLOBAL NETWORK

Globally recognised and  
proud member of the Global  
Institute on Innovation  
Districts (GIID).

Home to Australia's largest  
renewable hydrogen  
production plant,  
delivering a renewable  
hydrogen blend to  
customers on the  
existing gas network.



\*Approximately

# Together at Tonsley

**SIEMENS**  
energy



**BAE SYSTEMS**

**MICRO-X™**



**INNOVYZ**

**SPECIALISED SOLUTIONS.**

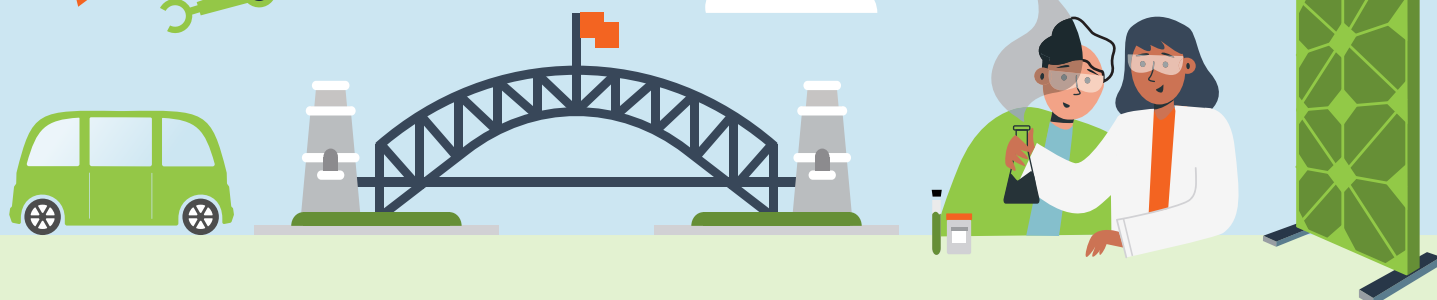


**COHAB**



**tafeSA**

**Innovation impact**



- The first to mass manufacture cold-cathode X-ray technology (Micro X)
- Formulated a crystal clear plastic lens with 100% UV protection (UV protect by Zeiss)
- Manages traffic across the country incl. lane management at Sydney Harbor Bridge (SAGE Automation)
- Controls the energy management for the MCG in Melbourne and Westfield Trade Centre in New York
- Delivers innovative modular office fit-out solutions (Azzo)
- Helps protect our health and medical staff with manufacture of PPE face shields (Form Cut)
- Keeps the sun out of the corporate boxes at the French Open (Ziptrak)
- Generates a sample perfume scent in seconds instead of hours with high-end robot Quanta (Accurate Dosing Systems)
- Since 2019 STEM Works and Children's University tours at Tonsley have inspired 1,659 students aged 7-18.

