

## Technical Specifications

### Venue:

Phone number: (08) 8375 6855

Email: [mcc@marion.sa.gov.au](mailto:mcc@marion.sa.gov.au)

Website: [www.marionculturalcentre.com.au](http://www.marionculturalcentre.com.au)

## STAGE

### Brief Stage Description:

The floor in the Domain Theatre has been constructed as a sprung dance floor so there is the option of performing without a raised stage. The width of the theatre is 10.75m and optimal depth is 6m but this can be greater depth if required. There are line of sight issues depending on audience capacity and main curtain positioning should a deeper performing area be required.

The optional temporary raised stage is made of up to 33 pro-stage units with a grey carpet surface and can be built in various configurations.

Standard stage height is 600mm and Maximum size stage is 10.75m wide with a depth of 6m. (Additional charges apply when including a stage build into venue hire.)

|                              |                                 |
|------------------------------|---------------------------------|
| Stage distributed load limit | 1000kg/m2 (Pro-Stage)           |
| Stage point load limit       | 300kg (Pro-Stage) 500kg (Floor) |
| Stage rake                   | No                              |

### Stage Dimensions:

#### Proscenium

|        |   |
|--------|---|
| Width  | 10.75m  |
| Height | 3.6m (stage to Truss) 4.2 (floor to truss) 5.2 (floor to ceiling) |

### Setting Line

As the proscenium curtain is movable on a tracking system the setting line can also be moved.

### Overhead obstructions

If stage is constructed prior to Bump In/Loading, then large load in door cannot be opened. There is a standard size door way next to the large load in door. (2400 wide x 820 high)

Cables on top of lighting truss and in catwalk.

### Auditorium:

Tiered seating bank consisting of 155 seats. First four rows of 9 chairs each side, 36 in total retract to open the floor area for various configurations. There are an additional 130 black chairs and various table and table sizes for workshop, conference and or cabaret settings.

|                         |                                       |
|-------------------------|---------------------------------------|
| Max. Room capacity      | 280 (including staff and performers.) |
| Tiered Seating capacity | 155 with options.                     |

---

**Curtain/Masking Facilities:**

1 x set Hand pull Traverse House Curtain Gathered Red Velvet (On LX2)  
1 x set Hand pull Upstage Traverse Curtain Gathered Black wool (On LX4)  
2 x Gathered Red Velvet 3m x 4.2m Legs (available on request)  
1 x 4.5m x 6.8m retractable cyclorama electric motor driven.

**Access Equipment:**

Elevated Work Platform - JLG 20MVL 11m Vertical lifter.

EWP Restrictions (Operator must hold relevant qualification to operate. Logbook must be signed by a qualified EWPA authorized operator)

**Staging Units:**

Prostage Modular staging to suit various configurations (Maximum raised stage size 10.75m x 6m)

18 x Pro-stage (with legs) 1000 x 2000 x 600-900

10 x Pro-stage (without legs) 1000 x 2000

3 x Pro-stage (without legs) 750 x 2000

2 x Pro-stage ramp Pieces 1000 x 2000 (Used as bridging pieces in full stage build)

2 x Pro-stage treads and tread riser

**Safety Curtain:**

Safety Curtain installed - No

Safety Curtain must be unobstructed at all times N/A

Thickness of Fire Curtain N/A

Distance from setting line N/A

**Loading Dock:**

Access

Lane way behind building faces out into the shopping centre carpark on the southern side of the building.

**Restrictions / Obstructions:**

Trucks must park parallel to loading dock door. Loading dock is not at stage level when raised stage is built. There is a kerbside next to the load in door that a minimum of a two person lift is required for heavy items.

**Additional Rigging Notes:**

Four lighting truss bars for hanging theatrical fixtures. Bars are able to track upstage/downstage.

Four Yoke Swivel Anchor rigging points above ceiling (5.4m above floor height) Rated at 15Kns.

**Staging Notes:**

Minimal wing space, entrance down stage prompt, upstage prompt and opposite prompt.

Access from back stage to bio/control desk via catwalk balcony on prompt side.

---

## LIGHTING

---

All access to lighting truss is via JLG lifter when working on flat floor. When raised stage built then access to lx bars over the stage area is only possible on ladders.

### Positions:

Stage LX Bars                      4 x Movable and lockable 600 x 600 tracked lighting truss 750 kg per truss.

See hanging plot for standard LX bar locations

Booms (PS & OP)                4 x 1.8m (Available upon request)

### Control:

Primary Console                LSC Clarity LX600 (plus 4 universe licence for Clarity software)

Secondary Lighting desks    LSC Maxim L Model 72 channel.

Signal distribution            2 x Universes of wired DMX to various points.

1 x Chauvet Net-XII artnet node with up to 8 additional DMX universes

Remote riggers onstage      No (control points around venue for desk relocation)

### Dimmer Racks:

Total Dimmers                5

Dimmer Locations            4 x Catwalk balcony on prompt side  
1 x Backstage for Floor LX

2.4Kw Dimmer Racks        1 x LSC 12way epac  
4 x LSC 12 Redback

Total dimmer Channels      60

### House Lights:

Independent control        Yes

Control positions            Wall panels at Control Desk & Auditorium Entrance.

Alternatively House lights can be isolated and controlled via DMX.

Fade time adjustable        No adjustment at control panels but can be programmed into console

### Power:

Three Phase Outlets

5 x 32 amp on balcony

5 x 32 amp upstage prompt and op of cyc screen at floor level

5 x 32 amp backstage op wall

### Cabling:

The Theatre has a good stock of 240v power and DMX leads to accommodate the standard lighting rig. Looms -8 x Wieland 5 way, 10m with headers and tails installed on lighting bars.

### Lighting Notes:

Lights are accessed by the JLG lifter. Ladders required to focus lights over a raised stage.

Patching on bars via Wieland Cables. There is an extension board back stage to service wall and floor patch points within the Domain Theatre via the venues dimmers.

**Stage Luminaire:****Profiles**

| Make    | Model            | Angle     | Detail/Accessories | Watt | Total |
|---------|------------------|-----------|--------------------|------|-------|
| Prolite | PR7              | 22-40 deg | Gobo holder & Iris | 650W | 4     |
| Selecon | Acclaim Zoomspot | 24-44 deg | Gobo holder & Iris | 650W | 5     |

**Fresnels**

| Make    | Model   | Detail/Accessories | Watt | Total |
|---------|---------|--------------------|------|-------|
| Selecon | Acclaim | 20 x Barndoor      | 650W | 20    |

**CYC & Overhead**

| Make  | Model                     | Detail/Accessories                       | Watt   | Total |
|-------|---------------------------|--|--------|-------|
| Event | LED PixBar 12x12 (55 Deg) | Patched in 72ch mode on CYC              | 12X12W | 7     |
| Event | LED PixBar 12x12 (30 Deg) | Patched in 72ch mode above Stage         | 12X12W | 6     |
| Nitec | LED Blinder II            | 2x100W cob led with control of each cell | 2X100W | 3     |

**Floor Lighting (Patched on Request)**

| Make  | Model                 | Detail/Accessories                  | Watt   | Total |
|-------|-----------------------|-------------------------------------|--------|-------|
| Event | PixBar 12x12 (30 Deg) | Patched in 72ch mode as side lights | 12X12W | 1     |
| ACME  | XA-400 Spot Pro (LED) | Upstage P&Op as side/back lighting  | 420W   | 2     |

**Follow Spot**

| Make    | Model           | Angle     | Detail/Accessories | Watt  | Total |
|---------|-----------------|-----------|--------------------|-------|-------|
| Profile | 12-2.0K compact | 5 - 20deg | 8 colour magazine  | 2000W | 1     |

**Intelligent Lighting**

| Make | Model                         | Detail/Accessories   | Watt | Total |
|------|-------------------------------|--|------|-------|
| ACME | Energy Spot Pro(XA-400) (LED) | Motorised Iris, Focus and Zoom (8-45Deg)<br>540 deg Pan + 270 deg tilt<br>CMY Colour Mix+Colour Wheel (9)<br>2 x Gobo wheels 1x rotating (7)+ 1x Static (9)<br>3 facet Prism, independant frost + Strobe   | 420W | 2     |
| ACME | Geist BSWF (XA-500) (LED)     | Motorised Iris, Focus and Zoom (6.5-54 Deg)<br>540 deg Pan + 270 deg Tilt<br>CMY Colour Mix+Colour Wheel(5)+Variable CTO<br>2 x Gobo wheels 1x rotating (7) + 1x static (8)<br>4 facet Prism, independant frost + strobe<br>4 x motorised framing shutters | 670W | 4     |

**Additional Lighting**

| Item        | Make    | Model  | Detail/Accessories              | Watt | Total |
|-------------|---------|--------|---------------------------------|------|-------|
| Mirror Ball | N/A     | 40 cm  | Mirror ball with electric motor |      | 1     |
| CYC Units   | Prolite | PR7    | 4 lamps per unit CYC Flood      | 500W | 4     |
| Floods      | Prolite | PR7    | Single overhead Flood           | 500W | 16    |
| Par Can     | Various | Par 64 |                                 | 300  | 10    |

---

## AUDIO

---

### Control Positions:

Rear OP of tiered seating. Open house console.

### Auditorium:

Variable if required. Charges will apply.

### Control & Amplification:

#### Primary Mixer

Midas M32 Live 40 channels, 32 Midas Pro Microphone Preamplifiers. Up to 10 output Channels with a further 6 reserved for in house PA System. (Two outputs needed for livestreaming if required)

#### Secondary Mixer (available on request)

Presonus Studio live 24:2:2. 24 mono inputs, 8 aux sends, 4 band parametric EQ, HPF/compressor/Limiter/gate on all inputs & outputs.

#### Portable Mixer (available on request)

Mackie DL802

#### Amplifiers (available on request)

1 x Crown CE1000 2 Channel Power Amplifier 1000w

#### External EQ (available on request)

dbx 2231

dbx 2031 Stereo

### Speakers:

#### FOH PA

2 x JBL SRX 815P 2000w Active 15" (Primary)

2 x JBL SRX 815P 2000w Active 12" (Centre Fill)

2 x JBL SRX 812P 2000w Active 12" (Delay Infill)

#### Foldback

6 x JBL PRX 1500w Active 12"

1 x RCF 300w Active 12"

2 x RCF 400w Active 15"

2 x RCF 700w Active 15"

#### Subs

2 x JBL SRX 818SP 1000w 18" Powered Sub

2 x JBL EON 518S 500w 15" Powered Sub (available on request)

## Playback

| Item                            | Make   | Model   | Detail  | Total |
|---------------------------------|--------|---------|---|-------|
| CD Player with 30 pin ipod dock | TASCAM | CD200iB | Single CD player with ipod dock and balanced outputs. | 1     |

## Microphones & RF Microphones

| Make       | Model        | Detail/Accessories  | Use              | Total |
|------------|--------------|---|------------------|-------|
| Shure      | SM58         | Pop guards and microphone clips   | Vocals           | 5     |
| Shure      | SM57         | Pop guards and microphone clips   | Instrument       | 4     |
| Sennheiser | G4 300       | 4 x Receivers for use with either G4 handheld (865 capsule), Lapel or HS4P headset mics | Vocal/roaming    | 4     |
| Sennheiser | W-365 G3 UHF | 4 x Receivers for use with either G3 handheld (865 capsule), Lapel or HS4P headset mics | Vocal/roaming    | 4     |
| Behringer  | C-2          | Small diaphragm condenser mic   | Various          | 2     |
| Rode       | NT5          | Small diaphragm condenser mic   | Various          | 2     |
| Rode       | NT3          | Large diaphragm condenser   | Various          | 4     |
| Rode       | NTG3         | Shotgun Microphone  | Various          | 2     |
| Audix      | D6           | Kick drum microphone  | Kick Drum        | 1     |
| Audix      | Drum Kit Set | 4 mics in case with drum clips  | Drums/Percussion | 1     |
| Shure      | Beta 57A     | supercardioid dynamic instrument mic  | Various          | 1     |

## Accessories

| Item                  | Model      | Detail/Accessories                | Total |
|-----------------------|------------|-----------------------------------|-------|
| Behringer D.I.        |            | Active D.I.                       | 4     |
| Swamp D.I.            |            | Passive Stereo D.I.               | 2     |
| K&M Microphone stands | Tripod     | With boom arm                     | 11    |
| K&M Microphone Stands | Tripod     | Short Stand with boom arm         | 2     |
| K&M Microphone Stands | Tripod     | Short, Heavy Base Kick Drum Stand | 1     |
| K&M Microphone Stands | Round Base | Straight, Adjustable Height       | 3     |
| Music Stand           | Tripod     | Adjustable Height                 | 2     |

## Line Patching

| Location                    | Details          | Numbering             | Total |
|-----------------------------|------------------|-----------------------|-------|
| OP stage wall/floor patch   | 5 send, 1 return | 1 - 6                 | 6     |
| P stage wall/floor patch    | 5 send, 1 return | 7 - 12                | 6     |
| Midas DL16 Digital Stagebox | 16 send 8 return | 1 - 20 & A - H (ret.) | 2     |

## Cabling

### Audio Cable

The theatre has a good stock to accommodate the venue's equipment.

### Multicore

2 x 9m 8 sends

1 x 30m 16 sends 4 returns

## AUDIO VISUAL

### Projection:

Epson GB6970-WUNL (6000 Lumen)

Projection controlled via Kramer VP773A switcher

(4x HDMI Inputs, 2x VGA Inputs & 1x HP Display Port Input, balanced stereo audio out)

### Projection Screens:

Venue Cyclorama 4.2m high x 6.8m Wide (Front Projection only)

Portable front projection screen. 10ft x 7ft

### Projector Rigging Points:

Has standard location on FOH truss but can be moved to suit requirements.

### Audio Visual Notes:

Lack of depth on the stage area restricts possibilities for rear projection.

### AV Playback Equipment:

| Item          | Model          | Detail/Accessories  | Total |
|---------------|----------------|---|-------|
| Panasonic DVD | PDV-D600E      | Single DVD player   | 1     |
| HP Laptop     |                | DVD or Digital File Playback, Microsoft Powerpoint          | 2     |
| Macbook Pro   | 2019 - 16 inch | Qlab licence. Clarity software. Also used for Livestreaming | 1     |

### Livestreaming and Recording Equipment:

Control:

Blackmagic Atem TV Studio HD

Inputs: 4 x HDMI , 4 x SDI , balanced stereo XLR audio.

Outputs: SDI Program Feed 1 x HDI mutliview, 1 x SDI multiview, 1 x SDI assignable aux.

(capable of multiple resolutions, all input equipment must match frame rate and resolution)

Recording:

Blackmagic Hyperdeck Studio Mini - Records Mp4 file via two SD card slots

Inputs: 1 x SDI

Outputs: 2 x SDI loop out, 1 x HDMI out

Livestreaming:

Blackmagic Web Presenter - Will scale any input to 720p and output via USB to computer software

inputs: 1 x HDMI, 1 x SDI

Outputs: 1 x SDI Loop, USB output (for output to streaming computer)

Cameras:

2 x Sony PXW-Z190 XDCAM 4k compact handcam, 1/3Cmos, 25 x Zoom, Record via two SD Card Slots

1 x Sony PXW-Z90 4k HDR XDCAM palm camera, records via two SD Card Slots

1 x Marshall Compact Block Camera 10x zoom (hung in rig as overhead camera as standard)

Signal Converters:

2 x Decimator MD-HX (SDI-HDMI cross converter and scaler)

2 x Blackmagic HDMI-SDI Bi-directional converter



---

## BACKSTAGE

---

### Stage Managers Desk

Available upon request

### Communications:

Talkback

Master Unit location

Sound desk

Total sub stations

3

Total headsets

3

Radio Units In-house

0

Talkback patching located at

Back Stage

Theatre Control Desk

Box Office

Gallery M

### Dressing Rooms

One stage level dressing room which can be divided into two if required. Includes mirrors and basins. Single unisex toilet with shower in next room.

Video feed from stage to T.V. in green room available on request.

### Laundry / Wardrobe:

Iron / ironing board 1 of each.

Clothes racks 2 Portable, 2 fixed within dressing room joinery.

Washing & Drying facilities available on request.

### Production Facilities:

Production Desk

Available upon request

Production Office

N/A

Access to phone for internet access

Available in Dressing Room and Theatre.

Public wireless internet available throughout centre.

### Green room:

Please note Greenroom and dressing rooms are the same room.

Tea / Coffee facilities No

Fridge / freezer No

Microwave No

Running water Yes



---

## VENUE CONTACTS

---

### Venue Address:

287 Diagonal Road, Oaklands Park, South Australia, 5046

### Venue Postal Address

PO BOX 476, Oaklands Park, South Australia, 5046

### Staff Contacts:

#### Unit Manager Cultural Facilities

Tyson Brown

Phone 08 8375 6788

Mobile 0466 027 167

Email [tyson.brown@marion.sa.gov.au](mailto:tyson.brown@marion.sa.gov.au)

#### Senior Theatre Technician

Trent Byles

Phone 08 8375 6852

Mobile 0466 556 984

Email [trent.byles@marion.sa.gov.au](mailto:trent.byles@marion.sa.gov.au)

#### Theatre Technician

Shaun Clarke

Phone 08 0375 6851

Email [shaun.clarke@marion.sa.gov.au](mailto:shaun.clarke@marion.sa.gov.au)

#### Administration & Promotions Officer

Lisa Martin

Phone 08 8375 6855

Email [lisa.martin@marion.sa.gov.au](mailto:lisa.martin@marion.sa.gov.au)

#### Office Coordinator/Venue Hire

Cathy Marshall

Phone 08 8375 6790

Email [cathy.marshall@marion.sa.gov.au](mailto:cathy.marshall@marion.sa.gov.au)

### Venue Plans:

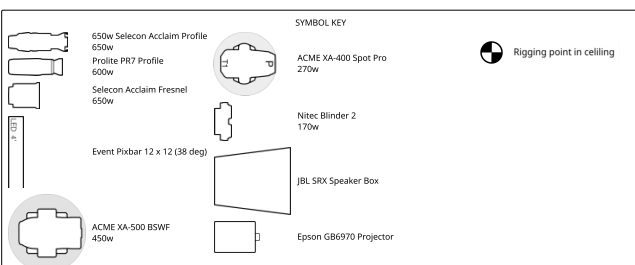
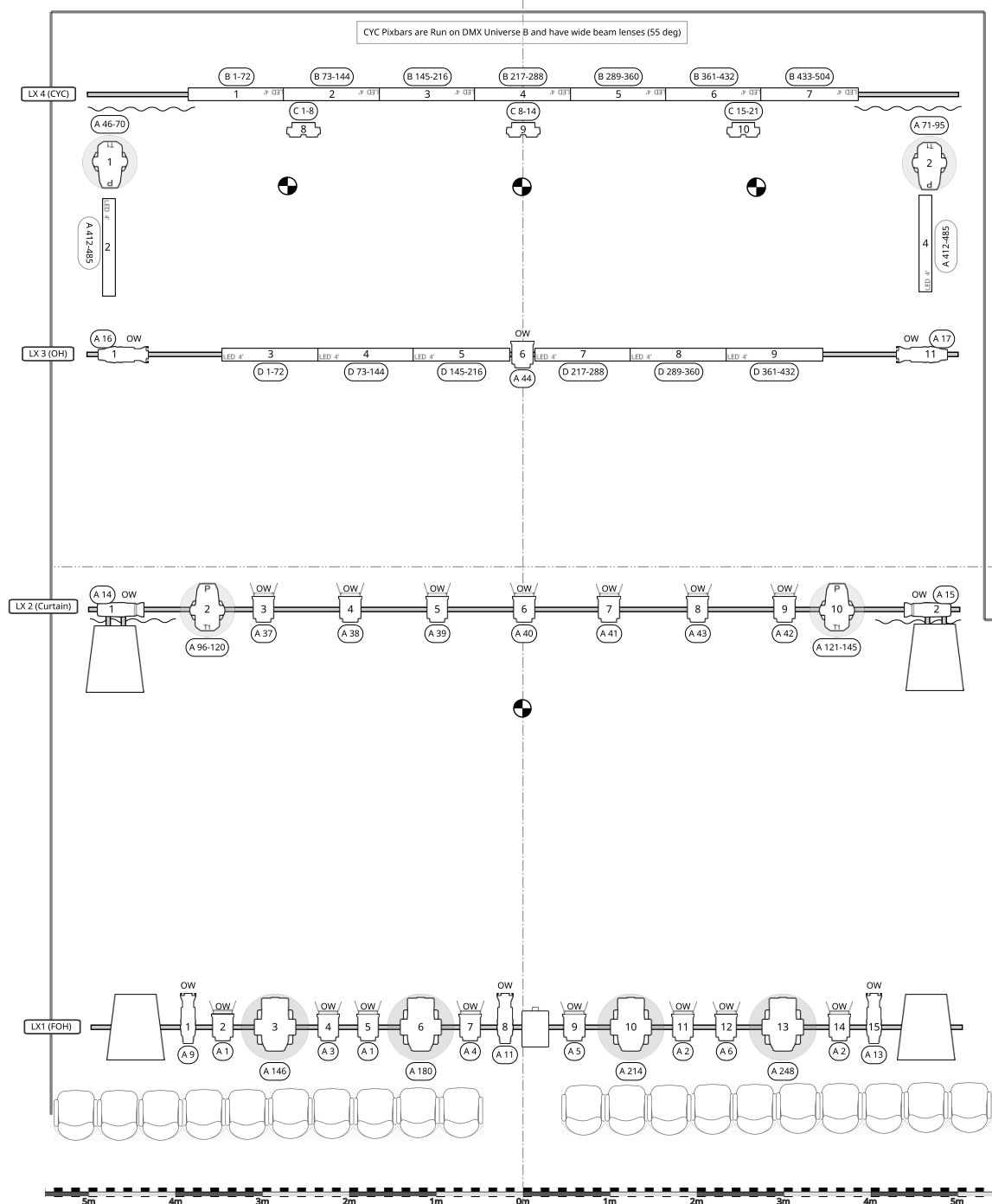
A3 Scale standard lighting rig plan available on request.

### Venue Information:

Contemporary, unique, adaptable, and intimate, the modern, multi-purpose design of the Domain Theatre creates a wonderful sensory audience experience. Adaptable to a wide range of configurations, the Domain Theatre is ideal for events ranging from theatrical or musical performances to product launches, banquets, film screenings, seminars, meetings and conferences.

## Domain Theatre Standard Lighting Rig

(A3 Scale drawing available on request)



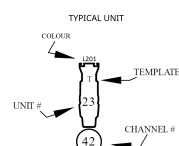
### General Notes

Lighting Bars are trackable in an upstage/downstage direction

All lighting bars are fixed at 4.2m high and are accessed via vertical Lift (operator must be licenced)

If a rased stage is installed lighting only accessible by ladder

House Lights controlled via DMX ch 509-512



Phone: (08) 8375 6852  
Email: [mcc@marion.sa.gov.au](mailto:mcc@marion.sa.gov.au)  
Web: [www.marionculturalcentre.com.au](http://www.marionculturalcentre.com.au)

**SCALE: 1:75**  
EXCEPT WHERE NOTED  
**DATE: 07/09/2021**  
**DRAWN BY: Trent**

DRAWN BY: Trent Byles

DRAWING No.

1

## STANDARD LIGHTING RIG