

## What are Native Bees?



Native bees don't live in hives and don't make honey!  
They live alone and build nests in tiny hollows and in the ground.

Native bees are not aggressive and are very unlikely to sting you.  
They are very shy and will only sting if you grab them or poke your finger in their home.

There are around 1,700 different native bee species in Australia,  
and 200 species in South Australia.





# Why are native bees important?

Native bees are important pollinators for many of our native plants.

Some native bees can do a special 'Buzz Pollination' where they literally shake the pollen out of a flower. Honey bees cannot do this. Crops such as tomatoes, eggplants and blueberries benefit from Buzz Pollination, which leads to bigger, better tasting fruit. Some native plants require Buzz Pollination to produce their fruits and seeds.



*Abelia grandiflora*



Callistemon - Bottlebrush

Native Bee populations in Australia are declining due to the destruction of their habitat. You can help by building a bee hotel, avoiding insecticides and planting native species in your garden.

For more information visit:  
[www.aussiebee.com.au/bee-friendly-garden.html](http://www.aussiebee.com.au/bee-friendly-garden.html)



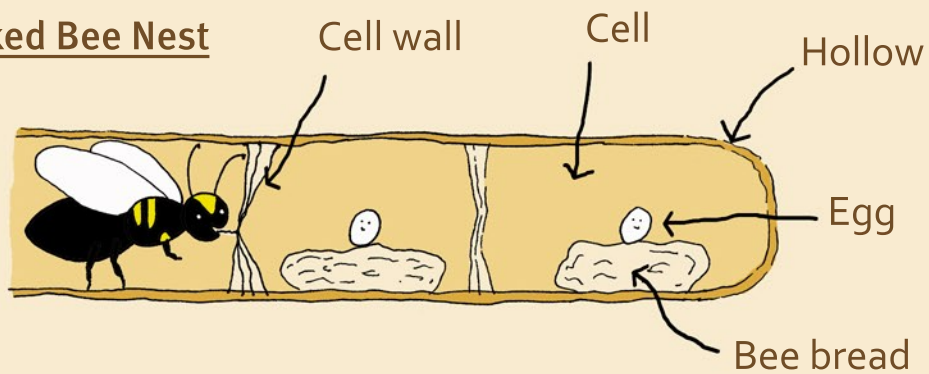
# How do native bees make nests?

To make a nest, a female native bee will:

- 1: Find a tiny hollow
- 2: Make small rooms called “cells” inside the hollow
- 3: Collect pollen and nectar to make “bee bread”
- 4: Fill each cell with a single egg and “bee bread”
- 5: Build a wall between each cell
- 6: Seal off the entrance when the hollow is full

Each bee species will build the cell walls from different materials like leaves, petals, or mud. When the eggs hatch they eat the bee bread and grow until they are ready to fly out of the hollow.

## Masked Bee Nest



The masked bee produce a cellophane-like material to make their cell walls.



# What bee is that?

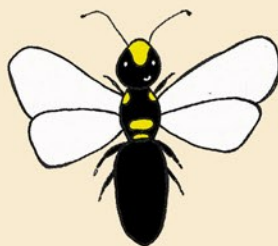
Native bees use different materials to make their nests. You can figure out which bees are using the hotel by having a close look at what materials they have used.



Resin Bees



- collect soft resin oozing from a damaged tree limbs



Masked Bees



- secrete a cellophane-like material

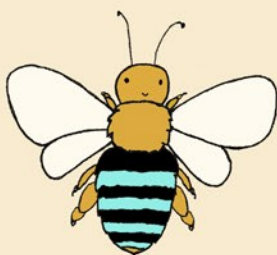


Leafcutter Bees - cut pieces of leaf from plants





## What bee is that?



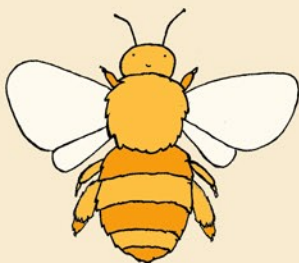
Blue Banded Bee



Female Blue Banded Bees dig shallow nest burrows in clay bricks or in the ground.



Males do not live in the nest burrows. At night they gather in groups to sleep on a stem or twig.



Teddy Bear Bee



Female bees build an individual nest for herself in a small burrow in the soil.

