

REPORT ON THE SECOND COASTAL WORKSHOP



TREASURING OUR COAST

4 August 2012

Coastal Changes
Doug Lord

Space-shaper
Stuart Heseltine



TREASURING OUR COAST

Coastal Workshop #2

CONTENTS

1. INTRODUCTION	3
2. COASTAL WORKSHOP #2	4
2.1 Session 1: Coastal changes	5
2.2 Session 2: 'Space-shaper'	6
<i>Activity 1 feedback: Collective thoughts and feelings of area</i>	7
<i>Activity 2 & 3 feedback: Heron Way visions</i>	9
2.3 'Burning Issues' poster	14
3. WORKSHOP DELIVERY FEEDBACK	15
4. CONCLUDING REMARKS	18
APPENDIX 1: 'Space-shaper' presentation	19

1. INTRODUCTION

The second Treasuring our Coast workshop has brought us closer to understanding our community's coastal aspirations and developing a shared coastal vision.

The series of Treasuring our Coast workshops were endorsed by Council at the General Council meeting on 26 July 2011. We have committed to delivering two Coastal Workshops per year (every six months).

The workshops focus discussion on coastal issues relevant to the City of Marion Strategic Plan, including looking at coastal matters using a sustainability approach (social, cultural, economic and environmental aspects).

The aim of the workshop series is to:

- › increase awareness of coastal issues and identify priorities for future work
- › engage the community and encourage active involvement in coastal issues / management
- › support collaboration between government and Council partners
- › support collaboration with community and between community groups
- › identify trends and seek ideas and priorities of participants.

The second workshop specifically focussed on providing the community with:

- › information and discussion time relating to the Hallett Cove Coastal Management Study
- › an opportunity to shape Heron Way Reserve.

Document purpose

This report presents the feedback that was provided at the 4 August 2012 workshop. The report's purpose is:

- › to facilitate communication on workshop participants' vision to:
 - › City of Marion Elected Members
 - › City of Marion staff members
 - › workshop participants
 - › general public
- › to provide input into the City of Marion's:
 - › Community Plan
 - › Heron Way Masterplan
 - › Coastal Management Study
 - › Environmental Communications and Engagement plan.
- › to assist to continually improve the workshops.

This report provides transparency in the engagement process, by showing workshop participants what is being communicated across Council.

This report summarises **community feedback** from the second 'Treasuring our Coast' workshop.

It assists communication of community **visions** and **aspirations** of our coast.

2. COASTAL WORKSHOP #2

The second ‘Treasuring our Coast’ workshop was held at the Boatshed Café on 4 August 2012.

More than 67 participants attended the workshop, including local residents and members of local environmental groups (plus City of Marion Elected Members and staff, and a Coast Protection Board staff member).

Coordination

The Coastal Workshop was overseen by a Steering Committee, which is responsible for guiding, coordinating, integrating and continuously improving the Treasuring our Coast workshops. The Steering Committee includes a number of City of Marion staff with either environmental, cultural or community development roles. A Working Group was also formed, which was responsible for planning and rolling out the workshop.

The City of Marion Environmental Sustainability team was the main point of contact for the workshop.

Summary of workshop proceedings

A Kurna ‘Welcome to Country’ was offered by Jamie Goldsmith followed by a welcome to participants by Mayor Felicity-ann Lewis. In addition, a short welcome video by Coastal Ward member and Deputy Mayor David Speirs was presented.

Coastal engineering specialist Doug Lord then provided a presentation and answered questions on the recently conducted Hallett Cove Coastal Management Study. Doug is Director and Principal of Coastal Environment Pty Ltd, and has more than 35 years experience in coast and estuary management.

Following this a ‘Space-shaper’ workshop, the first phase of the Heron Way Masterplan, was facilitated by Stuart Heseltine, Principal, Hemisphere Design. Stuart is an experienced Placemaker and Registered Landscape Architect, and was assisted by Dr Brett Grimm, Senior Landscape Architect City of Marion, also a Registered Landscape Architect. The Space-shaper workshop included a brief walk around the area as well as an interactive workshop.

Activities for children were also available, to provide older children with a chance to have their say, and to keep the younger ones busy.



One of the children creating her own coastal vision at the workshop.

2.1 SESSION #1: COASTAL CHANGES

Coastal engineering specialist Doug Lord provided a presentation on his recent Hallett Cove Coastal Management Study.

The study involved assessing Hallett Cove's current coastal processes, how climate change may impact the area in the future, and viable shoreline management options.

Significant community consultation was also undertaken, which included meetings with local environmental groups and residents, a community survey and liaison with State Government, Council departments and Elected Members.

Amongst other things, the study identified a mismatch between community expectations for a sandy beach at Hallett Cove, and what could realistically be achieved.

Findings of the survey identified many community members wanted Hallett Cove Beach to be transformed into a sandy beach. However any efforts to do so would have limited sustainable success due to the natural system of sand movement out of the cove.

The workshop provided people with the chance to hear about the various findings of the study, as well as the opportunity to ask questions or make comments.

Generally, people were happy to have explained how the beach works and to allow the natural processes to continue. They also appreciated the area's unique natural features with emphasis to enhance the natural qualities with revegetation works preferred to the coastal edge.

'Sand comes and goes, I agree with Doug's conclusions - leave the beach as it is.'

'Has great features for young children ie. rocks, crabs etc.'

Others wanted to learn more about the possibility of removing structures that impact on the natural movement of sand, changing the beach to allow access for young families, planting trees along nearby roads to shield the desalination plant, and stormwater impacts.

A full report of Doug Lord's study is available at marion.sa.gov.au

The majority of people **appreciated** having the chance to **understand** why any effort to **change the natural state** of the beach (to a sandy one) would have **limited** sustainable success.

2.2 SESSION #2: 'SPACE-SHAPER'

Hemisphere Design (Aust.) Pty. Ltd. was appointed by the City of Marion to facilitate a 'Space-shaper' workshop for Heron Way Reserve Masterplan, with local residents and the community of Hallett Cove who are users and friends of this significant coastal Reserve.

The 'Space-shaper' model, developed by the CABI (UK) organisation is widely regarded as innovative and 'best practice' community engagement and participation.

The outcomes of the workshop are intended to assist Council in the development of a masterplan for Heron Way Reserve that will be shaped by further community consultation to instill a sense of ownership and future stewardship of this important and treasured community asset.

The information in section "2.2 Session #2: 'Space-shaper'" was prepared by Hemisphere Design (Aust.) Pty. Ltd. and may not be used, reproduced or copied without its permission.

Session objectives

The scope of the exercise was to lead participants through a 'Space-shaping' workshop which would:

- › Establish parameters and guiding principles for the development of Heron Way Reserve Masterplan.
- › Deliver design and land use opportunities for further consideration in the development of a Masterplan which embraces the 'sense' and 'spirit' of place.
- › Inform, engage and re-assure the local community, understand their aspirations and expectations and capture their imagination to assist and guide the realisation of a Masterplan.
- › Ensure all relevant social, environmental, cultural and physical issues are identified and articulated in a clear and legible presentation.
- › Foster a sense of ownership and stewardship, introducing future place management opportunities.
- › Begin a process of capacity building and knowledge sharing, underpinning the realisation of a sustainable outcome.

Activities and feedback

The workshop comprised of the following activities:

1. introduction and scene setting, including an appreciation of Heron Way Reserve
2. sharing a 'secret Santa gift'
3. developing a collective 'Vision'.

Activity 1: Introduction, scene setting and appreciation

A facilitated walk of the site was conducted, visiting three predetermined locations where participants were invited to record and discuss their observations and sensory perceptions. A slideshow of the site location was also run as an alternate for those who wished not to participate in the walk.

Following this, Stuart presented a powerpoint of his and Brett's own perceptions of the site. A copy of the presentation is appended for reference (Appendix 1).

Participants were then invited to consider their own experience of visiting the Reserve and why they value the 'sense of place'. They were encouraged to share their experience amongst fellow participants at their table, collate and record their experiences and then provide feedback to the wider audience at the conclusion of the session.

ACTIVITY 1 FEEDBACK:

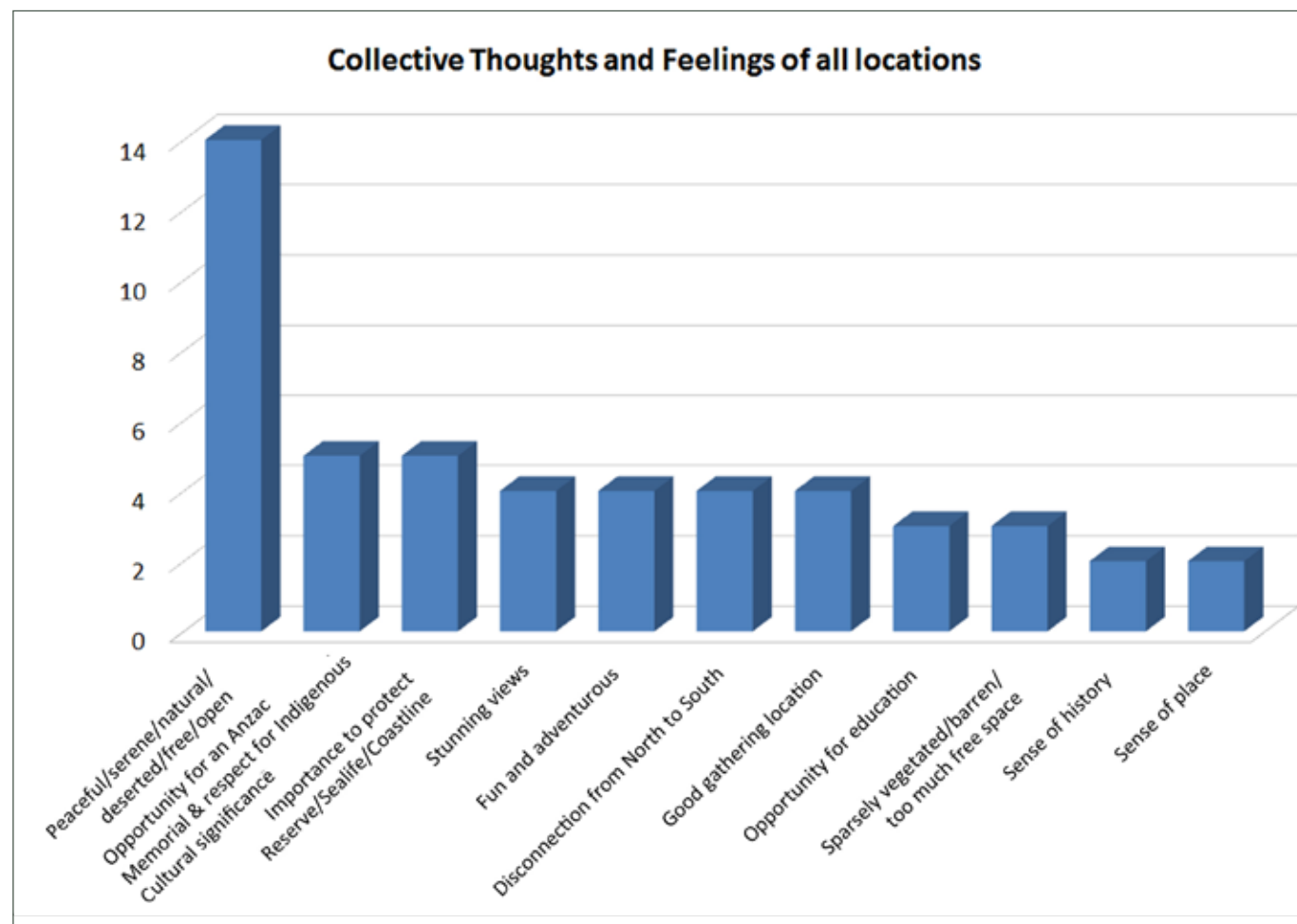
COLLECTIVE 'THOUGHTS AND FEELINGS' OF AREA

Table 1: Thoughts and feelings of area

Thoughts and feelings	Multiple
Peaceful / serene / natural / deserted / free / open	14
Opportunity for an Anzac Memorial and respect for Indigenous cultural significance	5
Importance to protect reserve / sealife / coastline	5
Stunning views	4
Fun and adventurous	4
Disconnection from North to South	4
Good gathering location	4
Opportunity for education	3
Sparsely vegetated / barren / too much free space	3
Sense of history	2
Sense of place	2

The 'thoughts and feelings' captured by the participants have been collated and are presented in the graph and table below.

These collective thoughts and feelings clearly demonstrate the significance placed by participants on the perceived qualities of peace, serenity, 'openness' and 'natural'. The 'stunning' views, opportunities for adventure and importance of the coastline and sea life as landscape assets were also considered to be notable qualities.



people felt the area was **peaceful, serene, natural, deserted, free** and **open**



- 1 BOATSHED CAFE/ACCESS TO HALLET COVE CONSERVATION PARK
- 2 RECREATION PLAY SPACE/AMENITIES/GRAND CENTRAL RESERVE
- 3 RIVER AND COASTAL EDGE



Left: locations included in the walk.

Above: the Hallett Cove area includes some of the Tjilbruke Dreaming Track

Activity 2: Sharing a 'secret Santa gift'

Each participant was asked to consider and describe with their fellow table participants one improvement - 'a gift' they think is essential for the future development of the Reserve. It was suggested that the improvement could be physical or sensory, e.g. develop a place for contemplation or reinforce the panoramic views. Participants were asked to record the 'gift' under the following headings which were themes developed in the first 'Treasuring our Coast' workshop;

- › Preserving our coast
- › Sharing our coast
- › Accessing our coast
- › Managing our coast.

Activity 3: Developing a collective 'Vision'

The collated responses to the 'secret Santa' exercise were pinned on the wall of the venue. Each table of participants were asked to select from another tables' 'secret Santa' and vote their 'top four' improvements or aspirations for the Reserve. Using coloured dot stickers, the following graphs illustrate the collation of these values and help define the community lead vision and aspirations for the Masterplan.

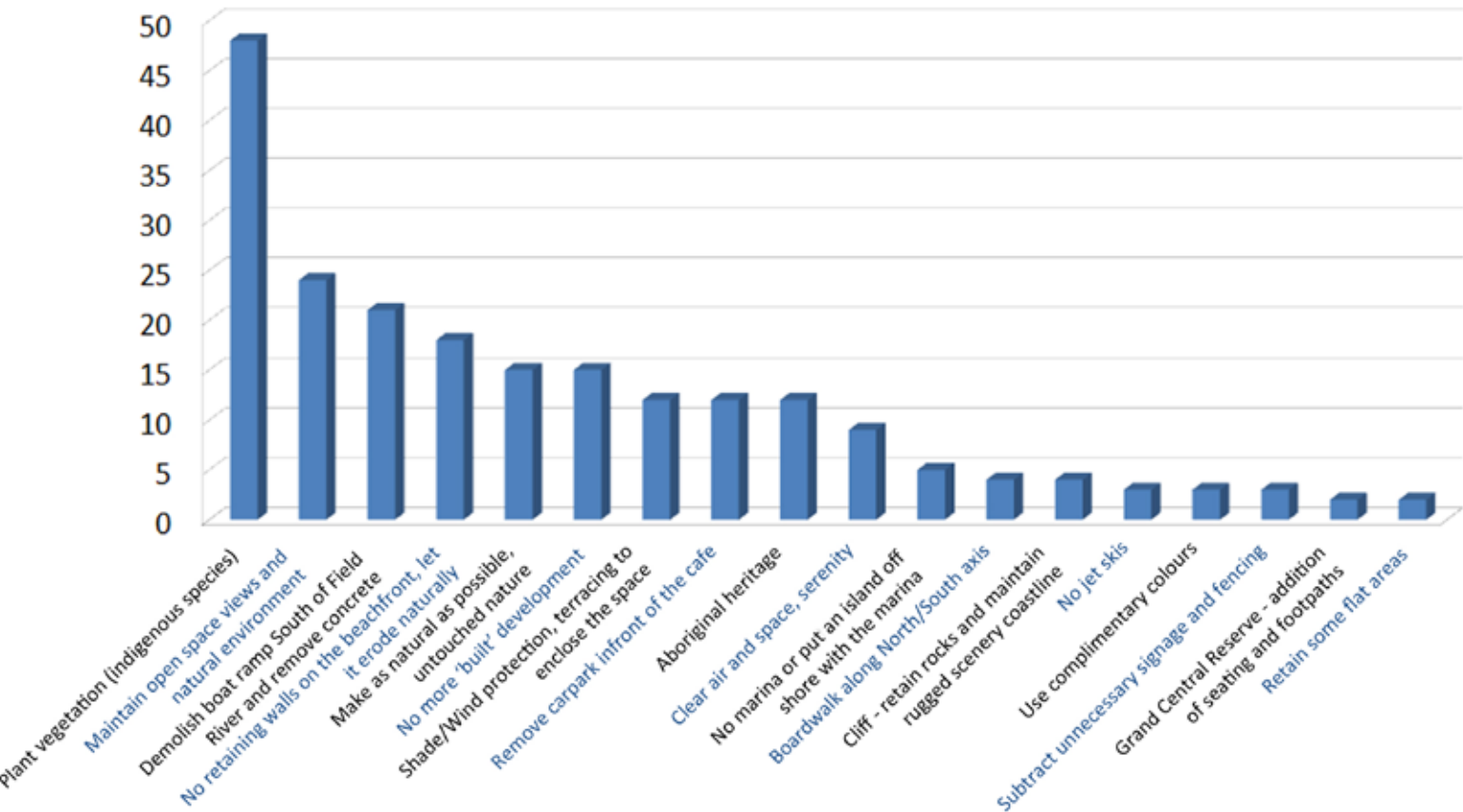
ACTIVITY 2 & 3 FEEDBACK:

HERON WAY VISIONS

PRESERVING OUR COAST

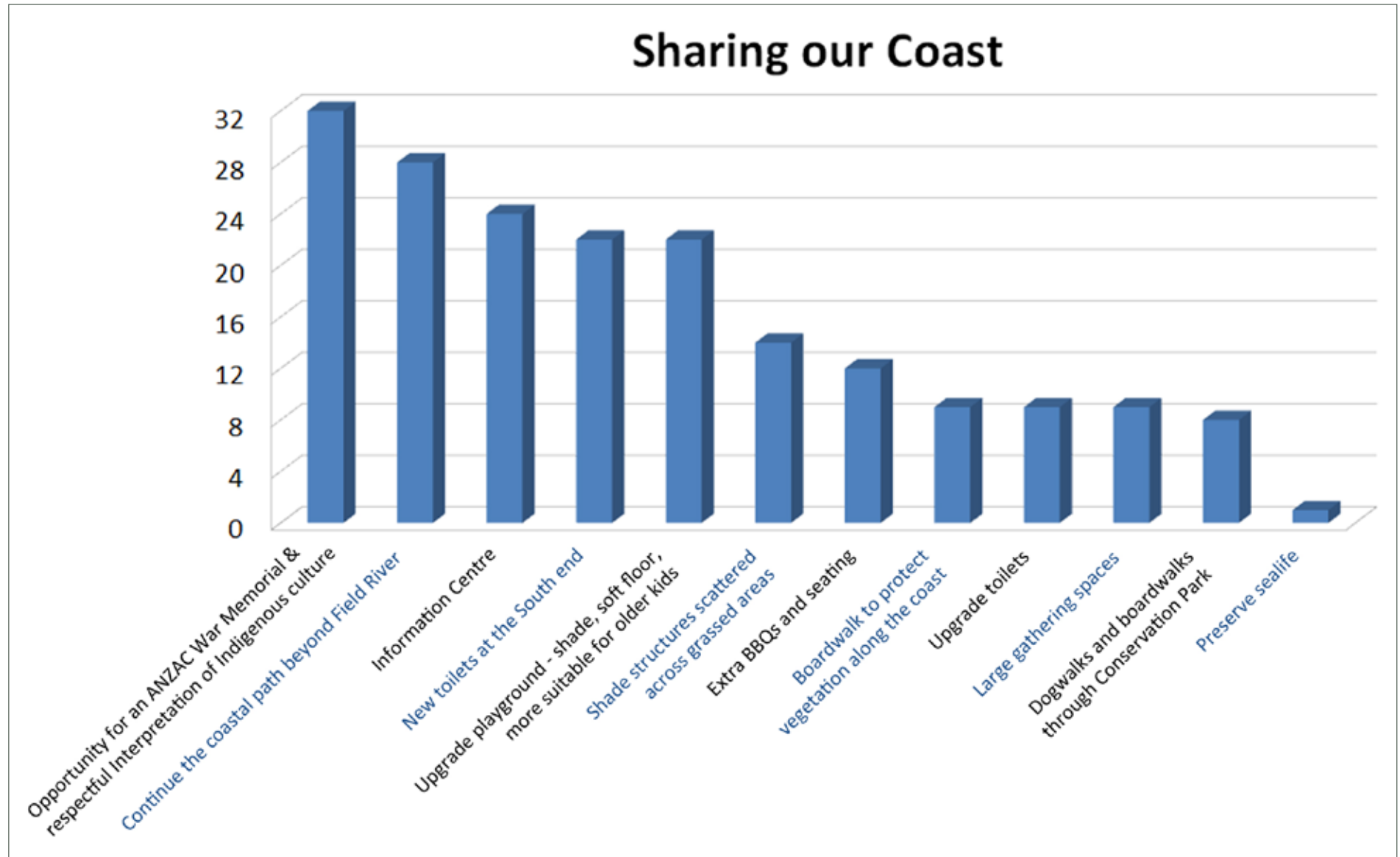
The unique qualities of the ‘sense of place’ are obviously values that are treasured by the community. Where practicable, these environmental, cultural and sensory qualities must underpin the proposed upgrade of the Reserve. There is strong support for the use of ingenious plantings in the upgrade of the Reserve.

Preserving our Coast



SHARING OUR COAST

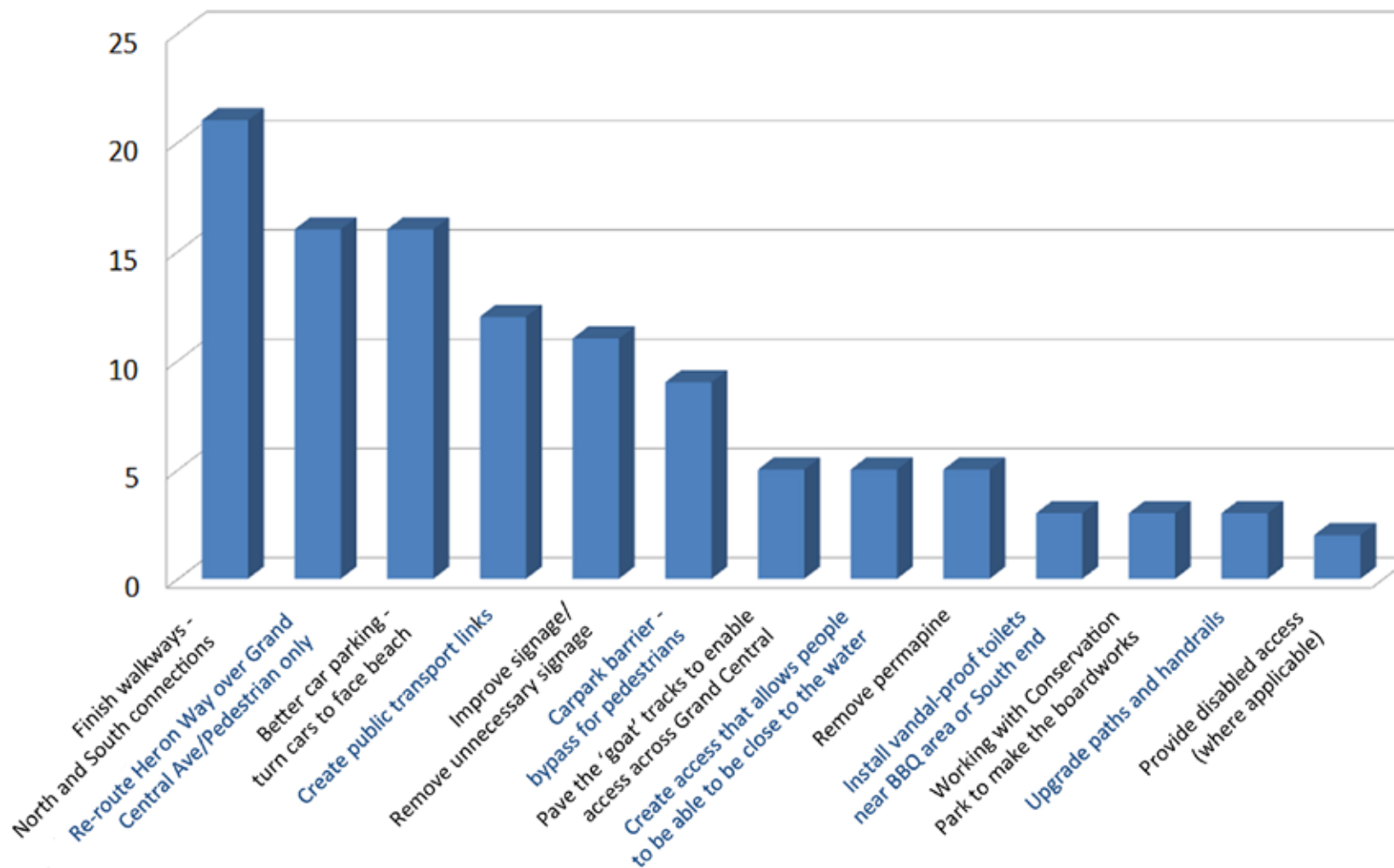
Improved interpretive facilities, commemorating the memories of the fallen from the community in global conflicts and the spiritual significance of the landscape to the pre-settlement Kurna community were recognised as important priorities. Again creating linkages to the wider landscape (e.g. the Field River system and beyond) is seen as highly desirable.



ACCESSING OUR COAST

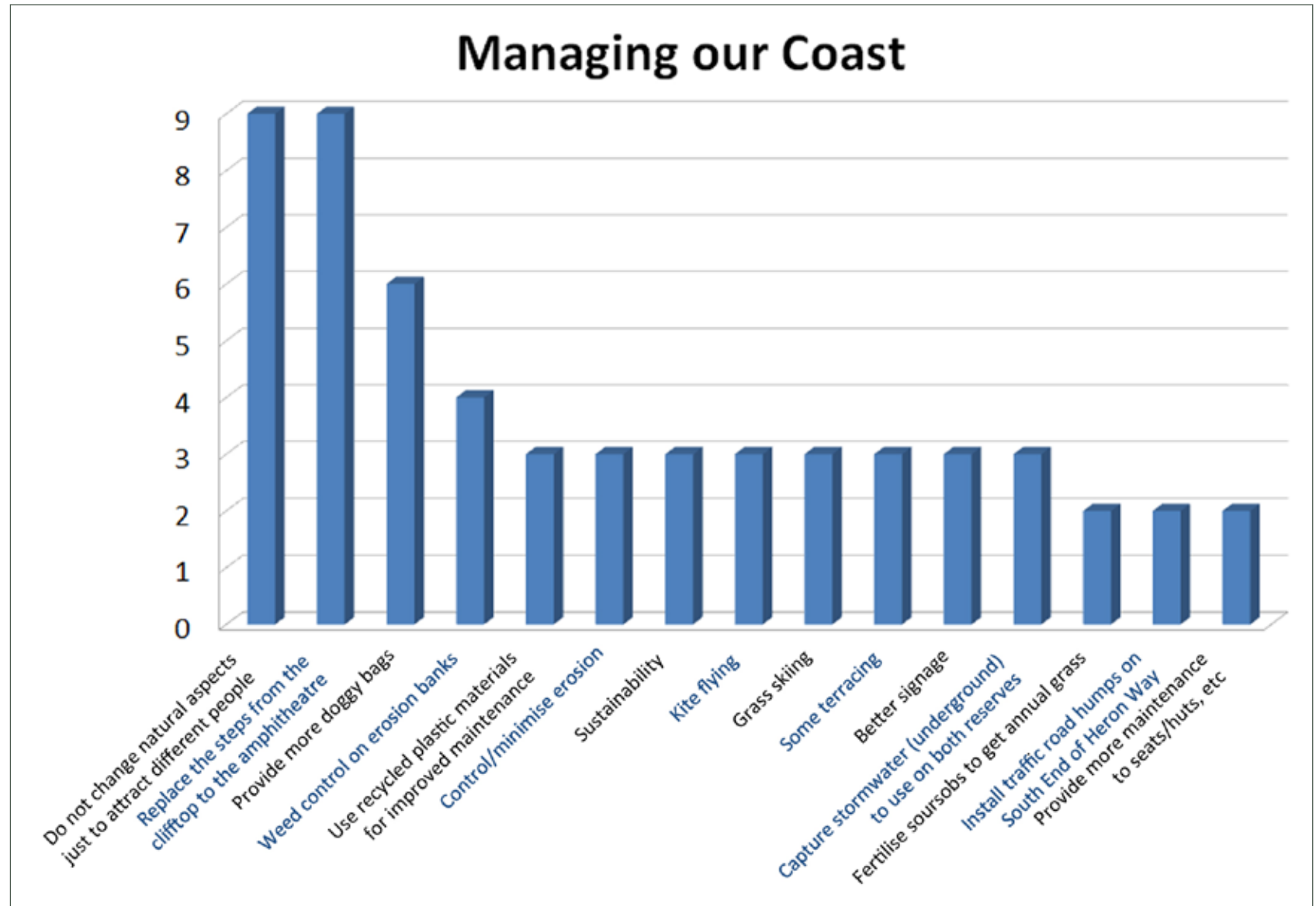
The results clearly demonstrate a desire to see improved access across and to the Reserve. This aspiration reinforces the significance of Heron Way Reserve as a regional, neighbourhood and local facility and as a feature of the wider Adelaide Metropolitan 'Coast Park'. Equity in access where achievable is also considered a pre-requisite of the proposed upgrade.

Accessing our Coast



MANAGING OUR COAST

Strong support for continuing the promotion of best practice sustainability with a focus on both the natural and cultural landscape. Managing and enhancing the Reserve to maintain a high standard of public safety, whilst retaining and enhancing the unique sense of place is considered important.



the local community has a **strong, collective passion** for and sense of **connection** with Heron Way Reserve

Summary of 'Space-shaper' workshop

The range and considered nature of the responses clearly indicate the local communities' collective passion for and sense of connection with Heron Way Reserve. The potential to further enhance the emerging spirit of local stewardship through an informal management body is supported by the strength and breadth of these priority listings.

Whilst a number of the listed priorities fall outside the intended scope of the Heron Way Reserve masterplanning exercise they will be given further consideration and where relevant will inform future directions in Council's consideration of the Coastal Management Plan.

The Coastal Management Plan will be delivered in collaboration with various state government bodies which include for example the Coast Protection Board and Natural Resources Management Board.



some priorities fall outside the **intended scope** of the masterplan, but will inform Council's consideration of the **Coastal Management Plan**

2.3 ‘BURNING ISSUES’ POSTER

Workshop participants were also invited to share their ‘burning issue’ by writing it on a Burning Issues Poster. This allowed people the chance to provide input at any point during the workshop.

Details of feedback collected through the ‘Burning Issues’ poster is provided in Table 2. Issues mainly reflect feedback that was also provided through the workshop exercises.

Burning issues included vegetating the two reserve areas with indigenous species, providing more dog poo bags and removing / containing asbestos. Other issues relate to preserving and appreciating the uniqueness and geological significance of the area and managing the area in terms of controlling introduced plants and animals.

Table 2: ‘Burning Issues’ feedback

Theme	Burning issue	Multiple
Preserving our coast	Vegetate Grand Central Avenue and Heron Way with natural species.	2
	Preserve the uniqueness of the natural area, and honour the Kaurna people.	1
	Appreciate geological significance of the area.	1
	Would an artificial island offshore assist in coastal protection? Real estate sales on island could support this.	1
	No to coastal development including boat ramps or harbours.	1
	Remove old pontoon and other major items from beach, south of Heron Way.	1
Managing our coast	More dog poo bags.	2
	Asbestos removal / containment.	2
	More shade on lawn area.	1
	Control the ‘gazania’s’ – south African weeds.	1
	Stop dog walkers in conservation park.	1
	Reduce cats, rabbits and foxes.	1
	Bring back indigenous species.	1
	Prevent people from walking on the Sugar Loaf, by installing a sign about the site’s importance.	1
Accessing our coast	Replace old sleeper steps going from the cliff top down to the amphitheater.	1
	Was a right of way established past the desalination plant? Will Port Stanvac be opened for a coastal path?	1
Sharing our coast	Travel resources and signage at public transport stops, to facilities and features.	1

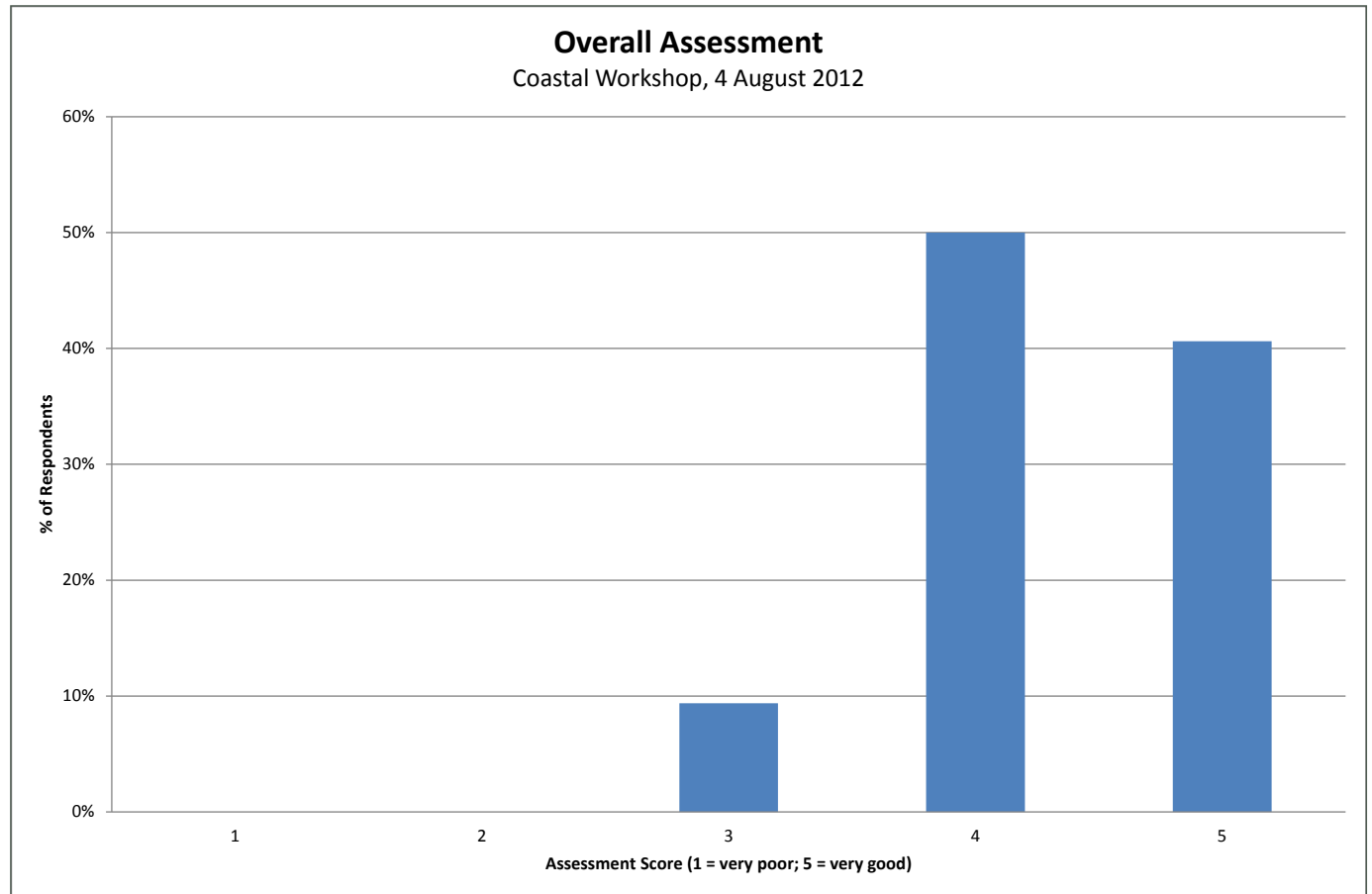
3. WORKSHOP DELIVERY FEEDBACK

Participants were also given the opportunity to provide feedback on the overall workshop via a feedback form.

Overall assessment

Similarly to the first 'Treasuring our Coast' workshop, participants overwhelmingly enjoyed the second workshop. Once again, over 90 per cent of respondents provided a 'very good' or 'good' score.

Once again, over **90 per cent** of respondents said the overall workshop was either **'very good'** or **'good'**.





Satisfaction levels of workshop aspects

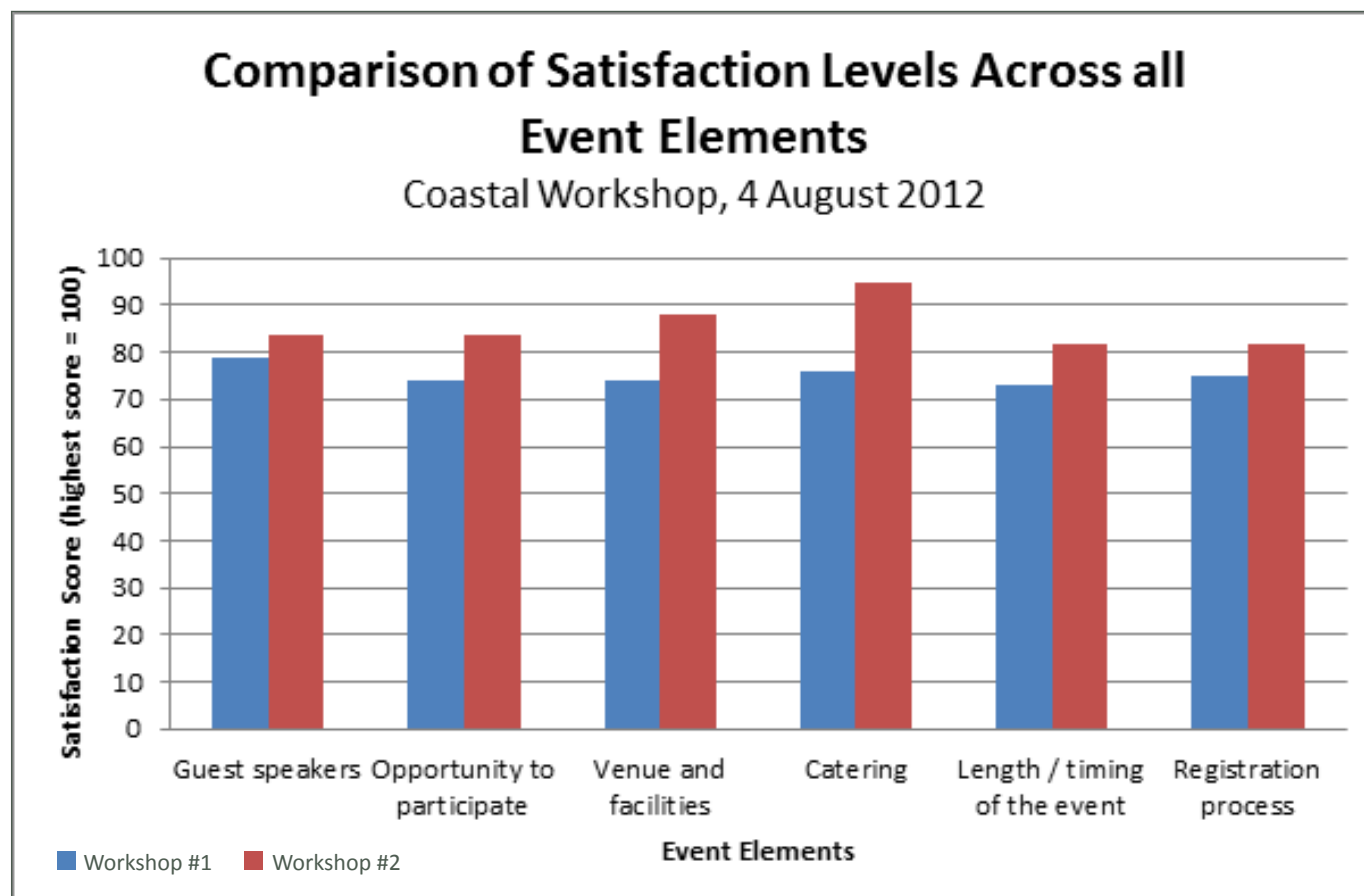
Participants were also asked to rate their satisfaction level with various aspects of the workshop, including:

- › guest speakers
- › opportunity to participate
- › venue and facilities
- › catering
- › length / timing of the event
- › registration process.

Participants had the opportunity to provide a score between 1 and 5 (1 = very dissatisfied; 5 = very satisfied). All scores were then calculated and converted to a score of 100, to assist with ease in comparison.

As indicated in the chart, all workshop aspects showed an improvement from the first event. The biggest improvements related to the catering (95/100) and the 'venue and facilities' (88/100). 'Guest speakers' again were highly enjoyed (84/100) as well as having the 'opportunity to participate' (84/100).

Finally, logistical aspects such as the 'registration process' and 'length / timing of the event' also scored very highly (82/100).





What worked well

To assist with the continual improvement of the Coastal Workshops, participants were asked to comment on what they liked best about the workshop.

The most commonly reported 'best enjoyed' aspect was having the chance to share thoughts and interact with others. People overwhelmingly appreciated having the opportunity to listen to other's opinions and views, as well as provide their own contribution. They also enjoyed other's willingness to participate and the chance to work with other people who were local to the area.

Comments included:

'Very interactive and learnt so much about other's opinions.'

'Chance to contribute ideas/concerns/needs to maintain and enhance Hallett Cove Reserves.'

'Talking to likeminded people. Involvement with the community.'

The guest speakers and the information and insights they provided were also very much enjoyed. Many enjoyed the practical nature of the presentations, and having the opportunity to have the Hallett Cove Coastal Management Study and the nature of area explained.

Some comments were:

'The geological tale by the first speaker - very informative and has put aside a lot of false impressions people try to press about the beach.'

'Information, mainly why the beach is the way it is.'

'Doug Lord's presentation. Stuart's enthusiasm.'

Furthermore, people enjoyed the chance to learn about the area's environmental significance, which was illustrated further during a brief walk around the area.

Other best enjoyed aspects related to the fact that the workshop was held, the workshop environment and the nature of the presenters and Council staff:

'The fact that it occurred. The council needs to be rewarded for their enthusiasm and for taking this important place seriously. It deserves a big effort to make any improvements the right improvements. Forget the 'sand on the beach' wants and focus on designing a place of environmental significance, yet is still a place for the community.'

'Openness of the design team / Council.'

'Doug Lord and council people - clear and practical.'

Suggestions for future workshops

Participants were also asked to provide feedback on ways to further improve the workshops. Some people wanted more time to think through the issues, provide ideas and to talk in small groups and with Council staff.

'Needed more time to write down our group's thoughts and ideas.'

'Preparatory info to attendees before event, so more time to consider issues etc.'

While many people highlighted the speakers' presentations as the most enjoyed aspect of the workshop, others thought there was room for improvement:

'Doug to simplify his talk so that the main points were still made but less said as he did say a lot very quickly.'

'Too much negativity during discussion from presenters.'

One person felt a need for more focus on 'plans, visions and masterplans'. Another commented:

'"Nimbys" managed reasonably well but still overly vocal. Silent majority still silent!'

Other logistical suggestions for improvement related to the registration process, the room's acoustics and microphone. Some ideas for future workshops included a speaker from the Coast Protection Board, as well as an educational walk and talk on environment and geology.

4. CONCLUDING REMARKS

Summary

The second Treasuring our Coast workshop met its objectives to provide the community with:

- › information and discussion time relating to the Hallett Cove Coastal Management Study
- › an opportunity to shape Heron Way Reserve.

Through doing so, it assisted to:

- › increase awareness of coastal issues and identify priorities for future work
- › engage the community and encourage active involvement in coastal issues / management
- › support collaboration between government and Council partners
- › support collaboration with community and between community groups
- › identify trends and seek ideas and priorities of participants.

During the workshop, coastal engineering specialist Doug Lord presented his findings from the coastal management study, before answering questions.

His presentation highlighted the unique beauty of the area, as well as directly addressed a key concern of many community members, which was the lack of sand on Hallett Cove Beach.

Community members had the opportunity to express their thoughts relating to the study's outcomes, as well as to hear other's opinions. Whilst many people expressed their agreement with Mr Lord to not interfere with the beach's natural processes, some people did have other suggestions and questions about the area.

The second half of the workshop saw placemaking expert Stuart Heseltine lead the group through a number of activities, including a walk around the area. His focus was to enable people to understand and share how they value the area, and what their aspirations for Heron Way Reserve were.

The collective thoughts and feelings of participants showed that people strongly valued the peaceful, serene and openness of the area. Other feedback related to the four themes identified during the first workshop:

- › **Preserving our coast:** the most prevalent theme, and illustrates how the area's unique qualities and sense of place are treasured by the community. Participants aspire for indigenous plantings and maintaining the area's natural qualities.

- › **Sharing our coast:** includes improving the interpretive cultural facilities, such as a war memorial and for Indigenous culture. Improving facilities such as connectivity, the toilets, upgrading the playground and adding shade were also important for people.
- › **Accessing our coast:** improving access across and to the reserve, including equitable access where achievable.
- › **Managing our coast:** includes promoting best practice sustainability with a focus on both the natural and cultural landscape.

Feedback on the workshop was very positive. Overall assessments showed 90% of participants 'highly enjoyed' or 'enjoyed' the event. All workshop aspects, including the guest speakers, opportunity to participate and catering scored very highly (over 80/100).

Participants appreciated the opportunity to listen to other's opinions and views, as well as to provide their own contributions. The speakers were highly enjoyed, as was the opportunity to have the coastal management study explained.

All feedback related to the delivery of the workshop will be considered in the preparation of future workshops. Improvement suggestions related to timing and the perception that more focus was needed to spend on visions. Simplified talks and logistical aspects of the workshop were also mentioned.

Appendix 1: 'Space-shaper' workshop presentation



HERON WAY COASTAL RESERVE
'Sensory' Landscape



'METRO' COASTAL

Coastal and Hills topography 'collide'

'PLACE QUALITIES'

- Intimate yet Expansive
- Rugged, Raw, Gnarly
- Engaging, Enthralling
- Robust, Dynamic
- Contemplative, Reflective
- Reminisce and Celebratory
- Unmanicured, Foreshore and Beach
- River/Dunal/Rocky
- Power of Nature
- Ocean/Waves -> Quiet and Peaceful

Feels like 'Somewhere' Else

WIND WAVES

Expansive Views

'VALES' COASTAL

Rugged Cliffs

Hills meets the Sea

Gateway

RUGGED CLIFFS

CONSERVATION

HERON WAY COASTAL RESERVE

'Sensory' Landscape



*An intimate yet
expansive landscape...*



HERON WAY COASTAL RESERVE

'Sensory' Landscape at night

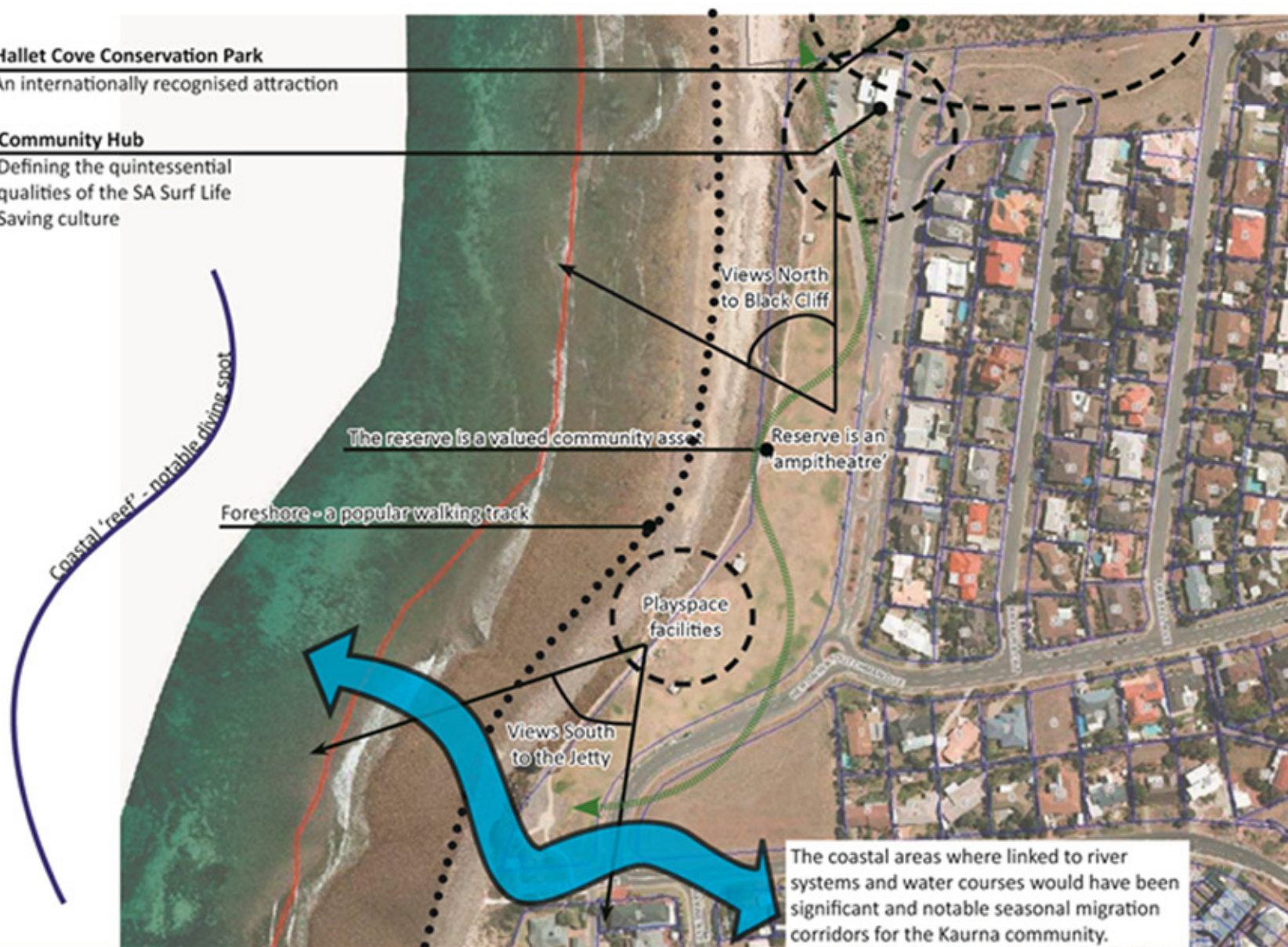


Hallet Cove Conservation Park

An internationally recognised attraction

Community Hub

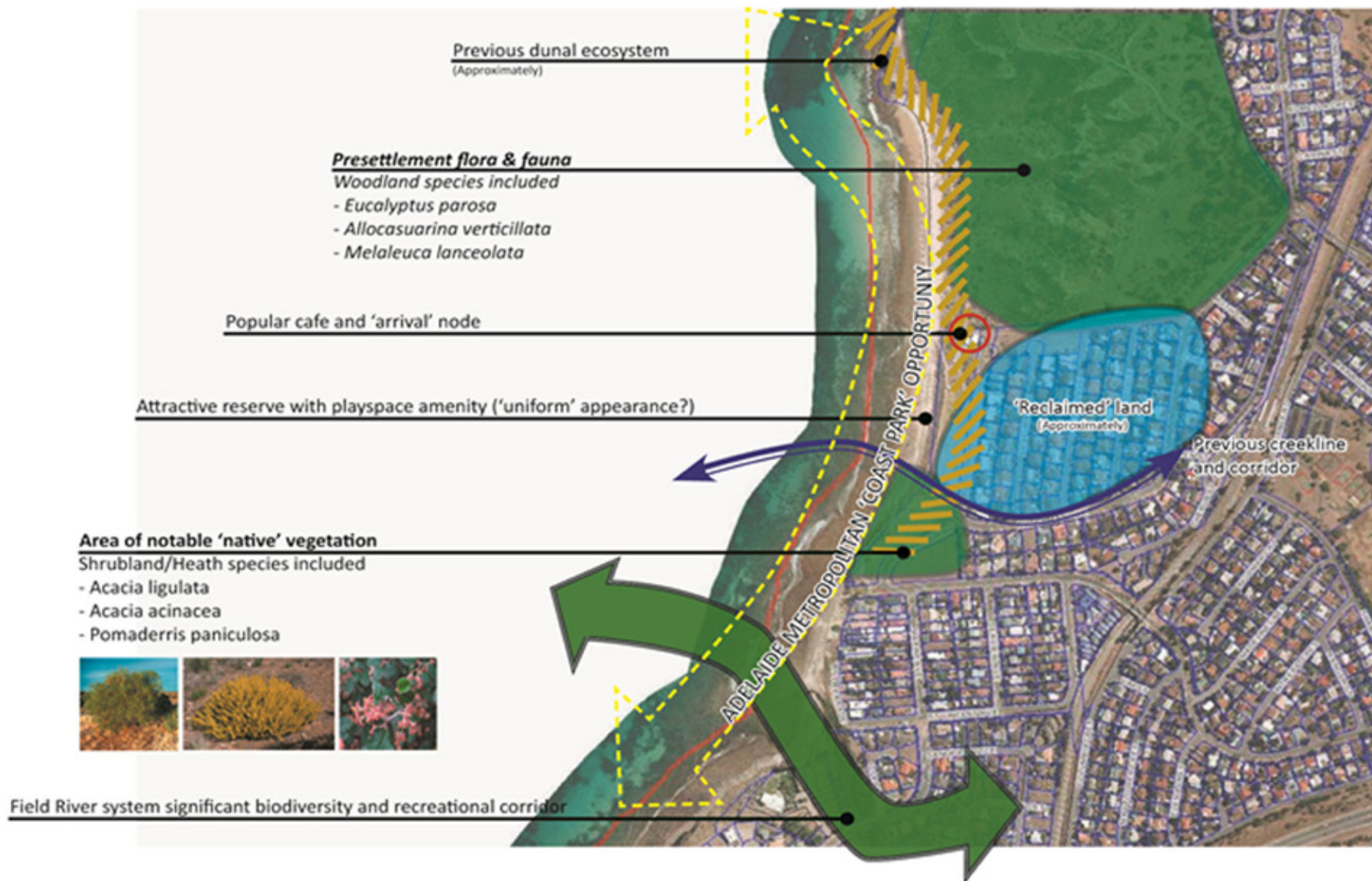
Defining the quintessential
qualities of the SA Surf Life
Saving culture



HERON WAY COASTAL RESERVE

'Cultural' Landscape – Adaptation and Occupation





HERON WAY COASTAL RESERVE

'Environmental Landscape' – Linkages and Movement

